

# **Product Catalog**

# **2025**

*Antenna and Cable analyzers*

*Antennas and amplifiers*

*SDR*

*Power supplies*

*Data logging and analysis*

*Mobile Radio Batteries*

*Ham Radio Software*

# TABLE OF CONTENTS

NEW devices by RigExpert .....	3	MRB-M4 .....	37
MATCH .....	10	MRB-MR7 .....	39
AA-35 ZOOM .....	12	WGPA500 .....	41
Stick 230 .....	14	2.1GPA .....	43
Stick 500 .....	16	2.4GPA .....	44
Stick Pro .....	18	770MPA .....	46
Stick XPro .....	20	915MPA .....	48
AA-650 ZOOM .....	22	5.8G Minigun .....	51
AA-1500 ZOOM .....	24	ACCESSORIES .....	52
AA-2000 ZOOM .....	26	WARRANTY .....	55
AA-3000 ZOOM .....	28	RigExpert Club .....	56
Fobos SDR .....	30	SOFTWARE .....	57
Shackmaster Power 600 .....	32	WHERE TO BUY .....	62
Shackmaster OSL kit .....	34	CONTACTS .....	64
REAMP .....	36		

# New devices by RigiExpert



## MATCH

Upgradeable Antenna  
and Cable Analyzer  
up to 70 MHz

**ADVANCED**  
License  
up to 230 MHz

RigiExpert

## MATCH

Upgrade license  
ADVANCED



## RFE

License  
up to 500 MHz

RigiExpert

## MATCH

Upgrade license  
RFE



**ADVANCED TO RFE\***  
License  
up to 500 MHz

RigiExpert

ADVANCED >>>> RFE\*

\*RFE - Radio Field Engineer



\*RFE - Radio-Field Engineer

# Fobos SDR

Wideband  
SDR Receiver



# MATCH:

The Future of Antenna and Cable Analysis



## Start with the MATCH Base Model

**MATCH Base model** lays a strong foundation for all your antenna and cable analysis needs. Base model – it is a MATCH device with preinstalled coverage **0.1-70 MHz** and important features.

**MATCH** can be enhanced with licenses to expand frequency up to 230 MHz with the Advanced license and 500 MHz with the RFE license.

It provides the essential tools and features to get started with precision and reliability. Designed to be user-friendly and effective, the MATCH Base model offers everything needed to analyze and fine-tune antennas and cables for both beginners and professionals alike.

As your needs evolve, MATCH grows with you through its **2 upgradeable licenses**





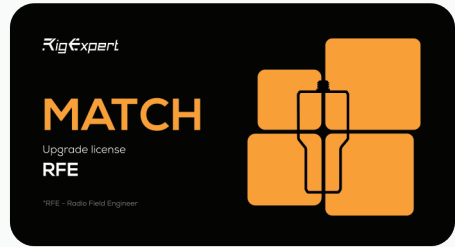
## Advanced License: up to 230 MHz



### Key Features:

- **Advanced Modes:** Includes the Smith Chart and Multiband Mode for tracking and comparing antenna performance. Multé Mode evaluates HAM bands with a star rating for quick performance insights. Quick Band Access ensures faster navigation to selected bands.
- **Advanced Tools:** Includes Stub Tuner, Cable Loss, Length vs VF, Cable Impedance, and OSL Calibration for precise adjustments.
- **Bluetooth Connectivity:** Wireless data management for seamless operation.

## RFE License: up to 500 MHz



### Key Features:

- **Extended Frequency Range:** Coverage up to 500 MHz, perfect for complex RF systems.
- **TDRChart Mode:** Locate faults in cables with Time Domain Reflectometry (TDR), calculating Distance to Fault (DTF) and analyzing fault characteristics.
- **LC Meter:** enabling precise measurements of Inductance (L), Capacitance (C), Quality Factor (Q), and Loss Tangent ( $\tan \delta$ ).
- **User OSL Profiles:** Supports up to 10 custom Open-Short-Load (OSL) profiles for precise calibration.



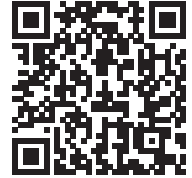
**Make the switch from  
Advanced to RFE License  
hassle-free with our  
Advanced to RFE license.**

**Just need to pay the  
difference**



# Fobos

## Wideband SDR Receiver



### GUD FR U

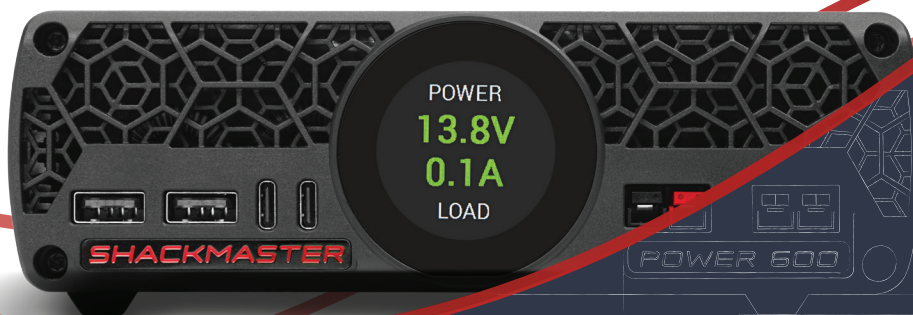
<b>Broad main frequency range</b>	continuous 50 MHz to 6 GHz coverage
<b>Two auxiliary coherent direct sampling channels</b>	100 kHz to 25 MHz coverage, suitable for diversity reception, correlation and phase-difference direction finding
<b>Overall frequency coverage</b>	100 kHz to 6 GHz
<b>50 MHz sampling bandwidth</b>	50 M samples per second IQ rate or 2×25 M samples per second direct sampling rate
<b>High-quality signal conversion</b>	double heterodyne, 14-bit sample depth analog to digital conversion (ADC).
<b>Continuous data stream</b>	digitized data with no dropped buffers, uninterrupted recording and real-time analysis
<b>All the features simultaneously, no “either-or”</b>	50 MHz rate, and 14-bit ADC and continuous data stream within continuous frequency coverage

- 8 lines GPO port (general purpose output – software-controlled digital outputs) added to control an external equipments.
- The low-pass filters for HF1 and HF2 inputs designed with cutoff frequency of 24 MHz.
- USB data link stability improved.

***Fobos SDR has a 14 GHz per second best in class  
Band Scan feature***

# Shackmaster Power 600

High-Quality DC power supply designed to ensure stable and adjustable 13.8V voltage



- Adjustable output voltage, 12-15V, MAX 40A
- Deadly Quiet
- Highly Efficient
- Lightweight and Compact
- OXpeditions Compatible
- Tolerant to gasoline generators
- Saves workspace due to flexible orientation
- 4 USB ports with Quick Charge 2.0
- Easy touchscreen operation. Free ShackPower SW for PC lets you configure Power600 and view parameters graphically

Learn more about the Shackmaster Power 600 via the link or scan the QR code to visit the product page:

<https://rigexpert.com/power-supply/shackmaster-power-600/>



# Buy a RigExpert Analyzer for Quality and Value

- User-friendly multilingual interface
- Consistency and accuracy without prior recalibration
- 2-year device replacement warranty
- A soft protective case included as part of the kit (except for Stick Models)



**AA-35 ZOOM**  
0.06 - 35 MHz



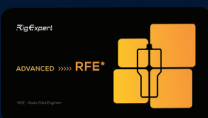
**MATCH**  
up to 70 MHz



**ADVANCED**  
up to 230 MHz



**RFE**  
up to 500 MHz



**ADVANCED TO RFE**  
up to 500 MHz



**Stick 230**  
0.1 - 230 MHz AS



**Stick 500**  
0.1 - 500 MHz AS



**Stick Pro**  
0.1 - 600 MHz AS



**Stick XPro**  
0.1 - 1000 MHz AS



**AA-650 ZOOM**  
0.1 - 650 MHz AS



**AA-1500 ZOOM**  
0.1 - 1500 MHz AS



**AA-2000 ZOOM**  
0.1 - 2000 MHz AS



**AA-3000 ZOOM**  
0.1 - 3000 MHz AS

# ALL you want in ONE

RigExpert Cable and Antenna analyzers are renowned for their comprehensive functionality.

Measuring of SWR, Return Loss, R, X, Z, L, C, Magnitude and Phase Angle, tuning stubs and single or multiband antennas, checking cables, locating transmission lines faults - here is not a complete list of the capabilities of each device.

In addition to the extensive functionality, users of our devices note a number of very important advantages. All our devices are:

- Factory calibrated. No calibration is required prior to using the RigExpert analyzer. The user just needs to turn the device on and it is ready to go.
- Intuitive and easy to use. Menus, self-explanatory keypad markings and the built-in context sensitive helper allow the user to refer to the User's Manual rarely.
- Durable and handy. The devices enclosed in a sturdy case are renowned for their reliability thanks to careful engineering and four-stage quality control.
- Program called RigExpertCare. RigExpertCare™ means that the company replaces defective goods with the new models as soon as possible.



## RigExperts MATCH

### MATCH Upgradeable Antenna & Cable Analyzer – Grow Your Game!

The next-generation antenna and cable analyzer built for flexibility and performance. Designed to evolve with your needs, MATCH offers cutting-edge technology and seamless upgrades.

Start with the base model from 0.1–70 MHz or go all-in with MATCH + Advanced License (up to 230 MHz) or MATCH + RFE License (up to 500 MHz)—the choice is yours! Use an easy conversion license from Advanced to RFE.



## RigExperts MATCH

<b>Frequency range</b>	0.1 to 70 MHz and the range can be upgraded to 230 MHz (available for Advanced license) and 500 MHz (available for RFE license)
<b>Frequency entry</b>	1 kHz
<b>Measurement for</b>	25, 50, 75, 100 Ohm
<b>SWR measurement range</b>	1 to 100 in numerical modes, 1 to 10 in chart modes
<b>R and X range</b>	0...10 000, -10 000...10 000 in numerical modes, 0.. 1 000, -1 000... 1 000 in chart modes
<b>Display modes</b>	<ul style="list-style-type: none"> <li>• SWR at single or multiple frequencies</li> <li>• SWR, return loss, R, X, Z, L, C at single frequency</li> <li>• SWR chart</li> <li>• R, X chart</li> <li>• Smith chart (available for Advanced, RFE licenses)</li> <li>• Return loss chart</li> <li>• Time Domain Reflectometry (TDR) chart (available for RFE license)</li> </ul>
<b>RF output</b>	Connector type: N-type Output signal shape: square Output power: +13 dBm (at 50 Ohm load)
<b>Power</b>	One Li-Ion battery ICR18650, 2600mAh
<b>Interface</b>	480x480 color TFT 4.0" LCD display 6x3 keys on the water-proof keypad Menus and help screens in English, German, French, Spanish, Portuguese, Italian, Ukrainian USB Type-C connection to a personal computer
<b>Dimensions</b>	93 × 207 × 37 mm (3.7 × 8.1 × 1.5 in)
<b>Operating temperature</b>	-10...60 °C (14...140 °F)
<b>Weight</b>	341g (12 oz)

**NOTE:**

All specifications could be changed without notice.



# RigExpert AA-35 ZOOM

## Tuning the system is easy

Portable analyzer with factory calibration is designed for checking and tuning HF systems up to 35 MHz.

Explore every graph detail on a large screen with ZOOM function.





## RigExpert AA-35 ZOOM

<b>Frequency range</b>	0.06 up to 35 MHz
<b>Frequency entry</b>	1 kHz
<b>Measurement for</b>	25, 50, 75, 100 Ohm
<b>SWR measure- ment range</b>	1 to 100 in numerical modes, 1 to 10 in chart modes
<b>R and X range</b>	0...10 000, -10 000...10 000 in numerical modes, 0.. 1 000, -1 000... 1 000 in chart modes
<b>Display modes</b>	R, X chart, 100 points SWR, return loss, R, X, Z, L, C at single frequency SWR chart, 100 points, RL chart, 100 points
<b>RF output</b>	Connector type: UHF (50-239) Output signal shape: square Output power: +13 dBm (at 50 Ohm load)
<b>Power</b>	Two 1.5V alkaline batteries, type AA or Two 1.2V Ni-MH rechargeable batteries type AA Max. 4 hours of continuous measurement, max. 2 days in stand-by mode when fully charged batteries are used When the analyzer is connected to a PC or a DC adapter with USB socket, it takes power from these sources
<b>Interface</b>	320x240 color TFT display 6x3 keys on the water-proof keypad Menus and help screens in English (standard), French, Ukrainian and Japanese USB connection to a personal computer
<b>Dimensions</b>	103 x 207 x 37 mm (4.1 x 8.1 x 1.4 inch)
<b>Operating temperature</b>	0...40 °C (32...104 °F)
<b>Weight</b>	310 g (10,9 oz) without batteries

### NOTE:

All specifications could be changed without notice.

## RigExpert STICK 230

### Modern and compact

Factory calibrated analyzer is designed for checking and tuning VHF systems up to 230 MHz.

Carry it in your pocket or your belt, and work in the field or at height for up to 16 hours on a single charge.

Easily read data on the screen even in direct sunlight.



## RigExpert STICK 230

<b>Frequency range</b>	0.1 up to 230 MHz
<b>Frequency entry</b>	1 kHz
<b>Measurement for</b>	25, 50, 75, 100, 150, 200, 300, 450 and 600 Ohm systems
<b>SWR measurement range</b>	1 to 100 in numerical modes, 1 to 10 in chart modes
<b>R and X range</b>	0...10 000, -10 000...10 000 in numerical modes, 0.. 1 000, -1 000... 1 000 in chart modes
<b>Display modes</b>	Multé (a quick check of multiband antennas) SWR chart, 100 points SWR, Return loss, R, X, Z, L, C, magnitude and phase angle at one frequency
<b>RF output</b>	Connector type: N Output signal shape: square Output power: -10 dBm (on 50 Ohm load)
<b>Power</b>	One 3.7V Li-Ion battery, type 18650 When the analyzer is connected to a PC or a DC adapter with USB socket, it takes power from these sources Charging time: 3 hours using the charger
<b>Interface</b>	200x200 monochrome e-paper display 2x3 keys on the water-proof keypad Menus and help screens in English (standard), Japanese Bluetooth: v. 4.2 BLE Single-mode Class B USB type C connection to a personal computer
<b>Dimensions</b>	40 x 185 x 33 mm (1.6 x 7.3 x 1.3 inch)
<b>Operating temperature</b>	-15° ... 40 ° C (5 ... 104 ° F)
<b>Weight</b>	185 g (6.5 oz) with the battery

### NOTE:

All specifications could be changed without notice.

## RigExpert STICK 500

### UHF in your pocket

Factory calibrated analyzer is designed for checking and tuning UHF systems up to 500 MHz.

Carry it in your pocket or your belt, and work in the field or at height for up to 16 hours on a single charge.

Easily read data on the screen even in direct sunlight.



## RigExpert STICK 500

<b>Frequency range</b>	0.1 up to 500 MHz
<b>Frequency entry</b>	1 kHz
<b>Measurement for</b>	12.5, 25, 28, 37, 50, 75, 100, 150, 200, 300, 450, 600 Ohm systems
<b>SWR measurement range</b>	1 to 100 in numerical modes, 1 to 10 in chart modes
<b>R and X range</b>	0... 10000, -10000... 10000
<b>Display modes</b>	HAM (a quick check of single band antenna) Multé (a quick check of multiband antennas) OSL calibration mode SWR chart, 100 points SWR, Return loss, R, X, Z, L, C, magnitude and phase angle at one frequency
<b>RF output</b>	Connector type: N Output signal shape: square Output power: -10 dBm (at 50 Ohm load)
<b>Power</b>	One 3.7V Li-Ion battery, type 18650 When the analyzer is connected to a PC or a DC adapter with USB socket, it takes power from these sources Charge time: 3 hours when using a charger
<b>Interface</b>	High contrast E Ink display, 200 × 200 2x3 keys on the water-proof keypad Menus and help screens in English (standard), Japanese Bluetooth: v. 4.2 BLE Single-mode Class B USB type C connection to a personal computer
<b>Dimensions</b>	40 x 185 x 33 mm (1.6 x 7.3 x 1.3 inch)
<b>Operating temperature</b>	-15° ... 40 ° C (5 ... 104 ° F)
<b>Weight</b>	185 g (6.5 oz) with the battery

### NOTE:

All specifications could be changed without notice.

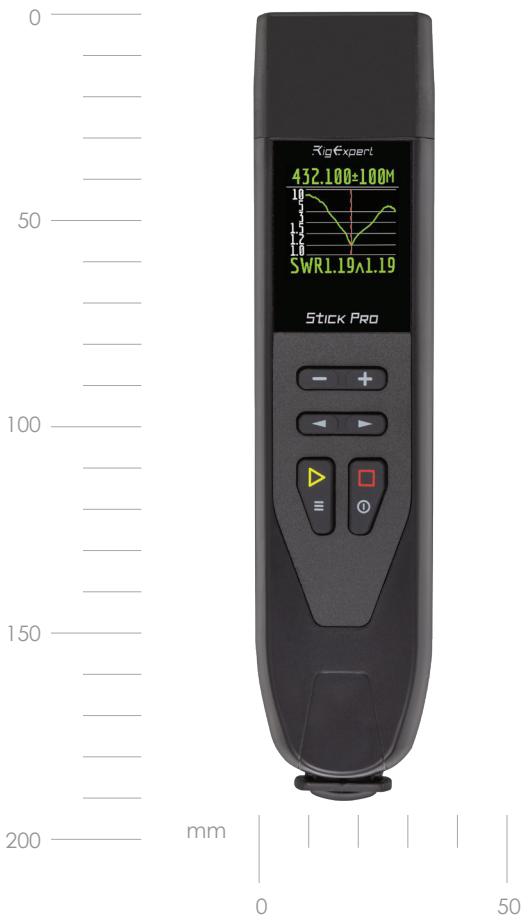
## RigExpert STICK PRO

### Small. Handy. Powerful. UHF.

Factory calibrated analyzer is designed for checking and tuning UHF systems up to 600 MHz.

Carry it in your pocket or your belt, and work in the field or at height for up to 16 hours on a single charge.

Easily read data on the screen even in direct sunlight.



## RigExpert STICK PRO

<b>Frequency range</b>	0.1 up to 600 MHz
<b>Frequency entry</b>	1 kHz
<b>Measurement for</b>	12.5, 25, 28, 37, 50, 75, 100, 150, 200, 300, 450, 600 Ohm systems
<b>SWR measurement range</b>	1 to 100 in numerical modes, 1 to 10 in chart modes
<b>R and X range</b>	0... 10000, -10000... 10000
<b>Display modes</b>	Multé (a quick check of multiband antennas) SWR chart, 100 points SWR, Return loss, R, X, Z, L, C, magnitude and phase angle at one frequency
<b>RF output</b>	Connector type: N Output signal shape: square Output power: -10 dBm (at 50 Ohm load)
<b>Power</b>	One 3.7V Li-Ion battery, type 18650 When the analyzer is connected to a PC or a DC adapter with USB socket, it takes power from these sources Charge time: 3 hours when using a charger
<b>Interface</b>	200x200 color TFT display 2x3 keys on the water-proof keypad Menus and help screens in English (standard), Japanese Bluetooth: v. 4.2 BLE Single-mode Class B USB type C connection to a personal computer
<b>Dimensions</b>	40 x 185 x 33 mm (1.6 x 7.3 x 1.3 inch)
<b>Operating temperature</b>	0...40 °C (32...104 °F)
<b>Weight</b>	185 g (6.5 oz) with the battery

### NOTE:

All specifications could be changed without notice.

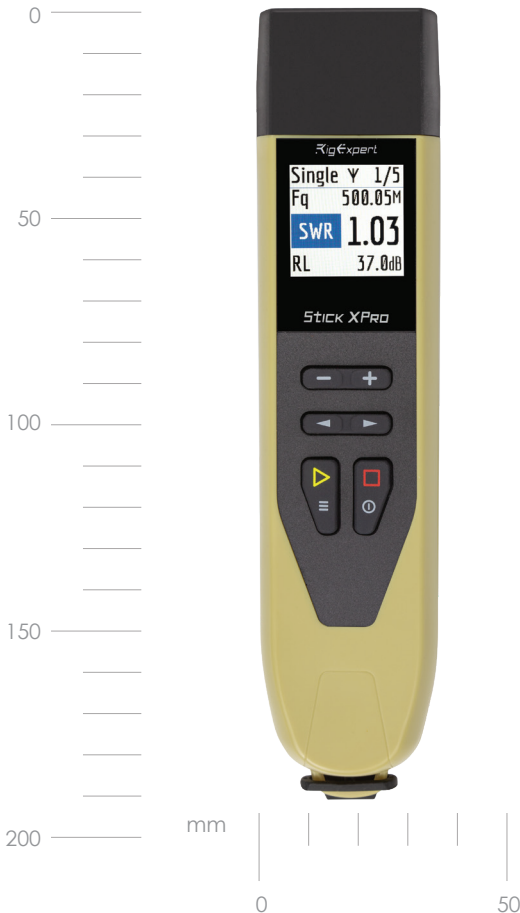
## RigExpert STICK XPRO

### Push your radio limits

Factory calibrated analyzer is designed for checking and tuning UHF systems up to 1000 MHz.

Carry it in your pocket or your belt, and work in the field or at height for up to 16 hours on a single charge.

Easily read data on the screen even in direct sunlight.





## RigExpert STICK XPRO

<b>Frequency range</b>	0.1 up to 1000 MHz
<b>Frequency entry</b>	1 kHz
<b>Measurement for</b>	12.5, 25, 28, 37, 50, 75, 100, 150, 200, 300, 450, 600 Ohm systems
<b>SWR measurement range</b>	1 to 100 in numerical modes, 1 to 10 in chart modes
<b>R and X range</b>	0... 10000, -10000... 10000
<b>Display modes</b>	SWR at single or multiple frequencies SWR, return loss, R, X,  Z , L, Cat single frequency SWR chart, 20 to 500 points R, X chart, 20 to 500 points Smith chart, 20 to 500 points Return loss chart, 20 to 500 points TDR (Time Domain Reflectometer) chart Cable tools (loss and characteristic impedance) Optional open-short-load calibration. Mute mode - to check your multiband antenna promptly
<b>RF output</b>	Connector type: N Output signal shape: square Output power: -10 dBm (at 50 Ohm load)
<b>Power</b>	One 3.7V Li-Ion battery, type 18650 When the analyzer is connected to a PC or a DC adapter with USB socket, it takes power from these sources
<b>Interface</b>	220x220 TFT color display 2x3 keys on the water-proof keypad Menus and help screens in English (standard), Japanese Bluetooth: v. 4.2 BLE Single-mode Class B USB type C connection to a personal computer
<b>Dimensions</b>	40 x 185 x 33 mm (1.6 x 7.3 x 1.3 inch)
<b>Operating temperature</b>	-20°- 55°C (-4°-131°F)
<b>Weight</b>	185 g (6.5 oz) with the battery

### NOTE:

All specifications could be changed without notice.

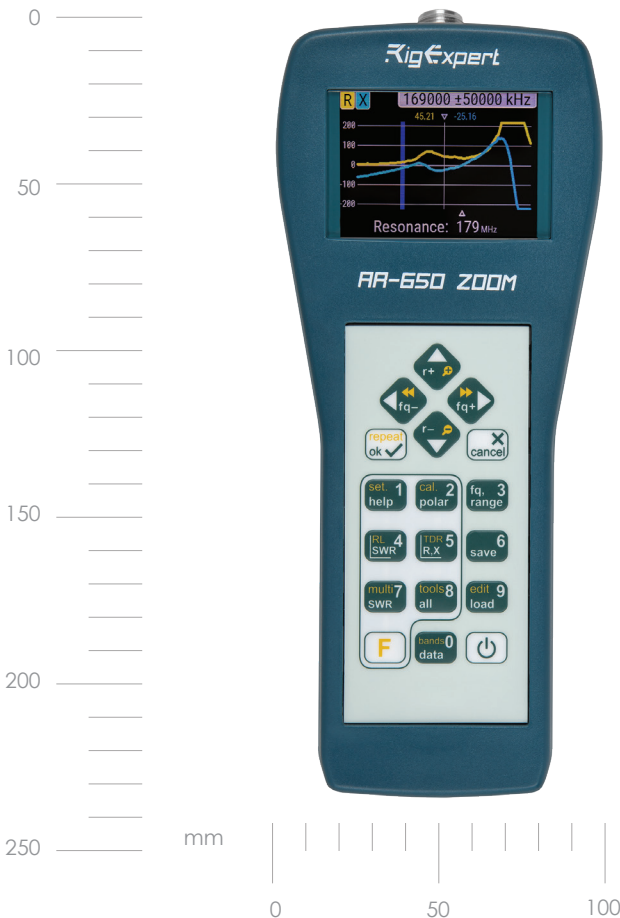
## RigExpert AA-650 ZOOM

### Wide range and PRO-level functionality

Factory calibrated analyzer is designed for checking and tuning UHF systems up to 650 MHz.

Expand measurement boundaries and functionality with PRO-level tool.

Explore every graph detail on a large screen with ZOOM function.



## RigExpert AA-650 ZOOM

<b>Frequency range</b>	0.1 up to 650 MHz
<b>Frequency entry</b>	1 kHz
<b>Measurement for</b>	12.5, 25, 28, 37, 50, 75, 100, 150, 200, 300, 450, 600 Ohm systems
<b>SWR measurement range</b>	1 to 100 in numerical modes, 1 to 10 in chart modes
<b>R and X range</b>	0...10 000, -10 000...10 000 in numerical modes, 0.. 1 000, -1 000... 1 000 in chart modes
<b>Display modes</b>	SWR at single or multiple frequencies SWR, return loss, R, X,  Z , L, Cat single frequency SWR chart, 20 to 500 points   R, X chart, 20 to 500 points Smith chart, 20 to 500 points   Return loss chart, 20 to 500 points TDR (Time Domain Reflectometer) chart Cable tools (loss and characteristic impedance) Optional open-short-load calibration. Multifunction mode - to check your multiband antenna promptly
<b>RF output</b>	Connector type: N Output signal shape: square Output power: -10 dBm (at 50 Ohm load)
<b>Power</b>	Three 1.5V alkaline batteries, type AA, or Three 1.2V Ni-MH batteries, type AAMax. 3 hours of continuous measurement, max. 2 days in standby mode when fully charged batteries are used When the analyzer is connected to a PC or a DC adapter with a USB socket, it takes power from these sources
<b>Interface</b>	320x240 TFT color display 6x3 keys on the water-proof keypad Menus and help screens in English (standard), Japanese, Ukrainian, Polish, Spanish and German Bluetooth: v. 4.2 BLE Single-mode Class B USB type C connection to a personal computer
<b>Dimensions</b>	230 x 100 x 55 mm (9 x 4 x 2 inch)
<b>Operating temperature</b>	0...40 °C (32...104 °F)
<b>Weight</b>	450 g (15.9 oz)

### NOTE:

All specifications could be changed without notice.

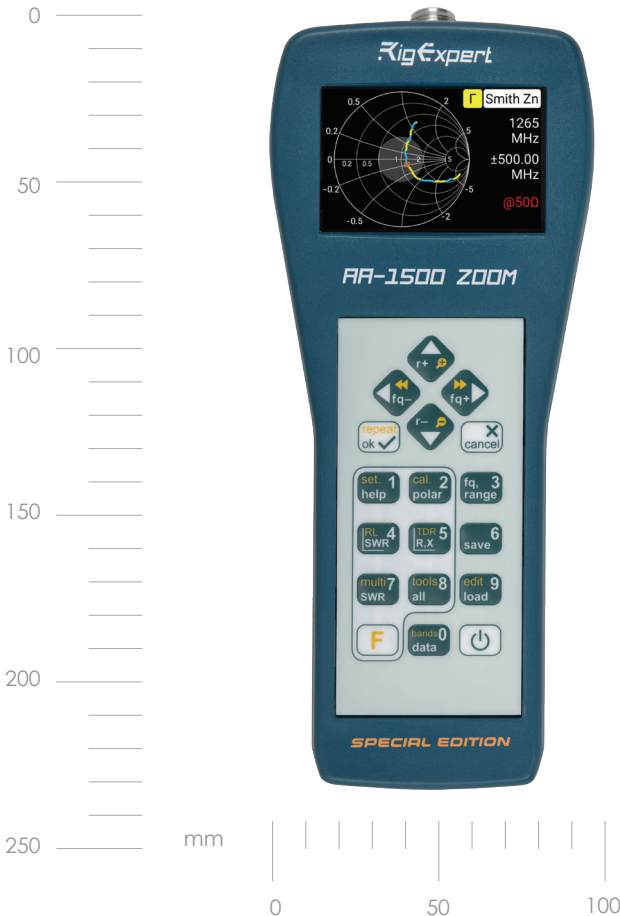
## RigExpert AA-1500 ZOOM

### An updated and even more powerful

Factory calibrated analyzer is designed for checking and tuning UHF systems up to 1500 MHz.

Expand measurement boundaries and functionality with PRO-level tool.

Explore every graph detail on a large screen with ZOOM function even in direct sunlight.



## RigExpert AA-1500 ZOOM

<b>Frequency range</b>	0.1 up to 1500 MHz
<b>Frequency entry</b>	1 kHz
<b>Measurement for</b>	12.5, 25, 28, 37, 50, 75, 100, 150, 200, 300, 450, 600 Ohm systems
<b>SWR measurement range</b>	1 to 100 in numerical modes, 1 to 10 in chart modes
<b>R and X range</b>	0...10 000, -10 000...10 000 in numerical modes, 0.. 1 000, -1 000... 1 000 in chart modes
<b>Display modes</b>	SWR at single or multiple frequencies SWR, return loss, R, X,  Z , L, Cat single frequency SWR chart, 20 to 500 points   R, X chart, 20 to 500 points Smith chart, 20 to 500 points   Return loss chart, 20 to 500 points TDR (Time Domain Reflectometer) chart Cable tools (loss and characteristic impedance) Optional open-short-load calibration. Multimode - to check your multiband antenna promptly
<b>RF output</b>	Connector type: N Output signal shape: square Output power: -10 dBm (at 50 Ohm load)
<b>Power</b>	Three 1.5V alkaline batteries, type AA Three 1.2V Ni-MH batteries, type AA   Three 3.7V LiPo batteries, 14200 Max. 4 hours of continuous measurement, max. 2 days in standby mode when fully charged batteries are used. When the analyzer is connected to a PC or a DC adapter with a USB socket, it takes power from these sources
<b>Interface</b>	USB connection to personal computer 800×480 color Blaview® display 6x3 keys on the water-proof keypad Menus and help screens in English (standard), French, Italian, Japanese, Ukrainian, Portuguese, Spanish and German Bluetooth v. 4.2 (Single-mode, Class B)
<b>Dimensions</b>	100 × 230 × 55 mm, (4 × 9 × 2 inch)
<b>Operating temperature</b>	0...40 °C (32...104 °F)
<b>Weight</b>	442g (15.6 oz)

### NOTE:

All specifications could be changed without notice.

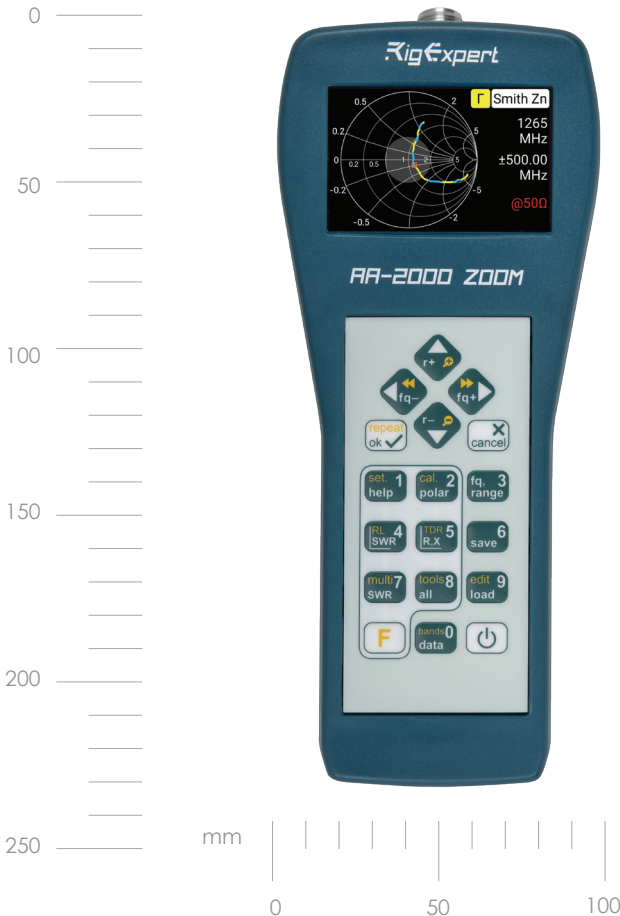
## RigExpert AA-2000 ZOOM

### TURN complex analysis into FUN!

Factory calibrated analyzer is designed for checking and tuning UHF systems up to 2000 MHz.

Expand measurement boundaries and functionality with PRO-level tool.

Explore every graph detail on a large screen with ZOOM function even in direct sunlight.



## RigExpert AA-2000 ZOOM

<b>Frequency range</b>	0.1 up to 2000 MHz
<b>Frequency entry</b>	1 kHz
<b>Measurement for</b>	12.5, 25, 28, 37, 50, 75, 100, 150, 200, 300, 450, 600 Ohm systems
<b>SWR measurement range</b>	1 to 100 in numerical modes, 1 to 10 in chart modes
<b>R and X range</b>	0...10 000, -10 000...10 000 in numerical modes, 0.. 1 000, -1 000... 1 000 in chart modes
<b>Display modes</b>	SWR at single or multiple frequencies SWR, return loss, R, X,  Z , L, Cat single frequency SWR chart, 20 to 500 points   R, X chart, 20 to 500 points Smith chart, 20 to 500 points   Return loss chart, 20 to 500 points TDR (Time Domain Reflectometer) chart Cable tools (loss and characteristic impedance) Optional open-short-load calibration. Multe mode - to check your multiband antenna promptly
<b>RF output</b>	Connector type: N Output signal shape: square Output power: -10 dBm (at 50 Ohm load)
<b>Power</b>	Three 1.5V alkaline batteries, type AA Three 1.2V Ni-MH batteries, type AA   Three 3.7V LiPo batteries, 14200 Max. 4 hours of continuous measurement, max.2 days in standby mode when fully charged batteries are used When the analyzer is connected to a PC or a DC adapter with a USB socket, it takes power from these sources
<b>Interface</b>	USB connection to personal computer 800×480 color Blanview® display 6x3 keys on the water-proof keypad Menus and help screens in English (standard), French, Italian, Japanese, Ukrainian, Portuguese, Spanish and German Bluetooth v. 4.2 (Single-mode, Class B)
<b>Dimensions</b>	100 × 230 × 55 mm, (4 × 9 × 2 inch)
<b>Operating temperature</b>	0...40 °C (32...104 °F)
<b>Weight</b>	450 g (15.9 oz)

**NOTE:**

All specifications could be changed without notice.

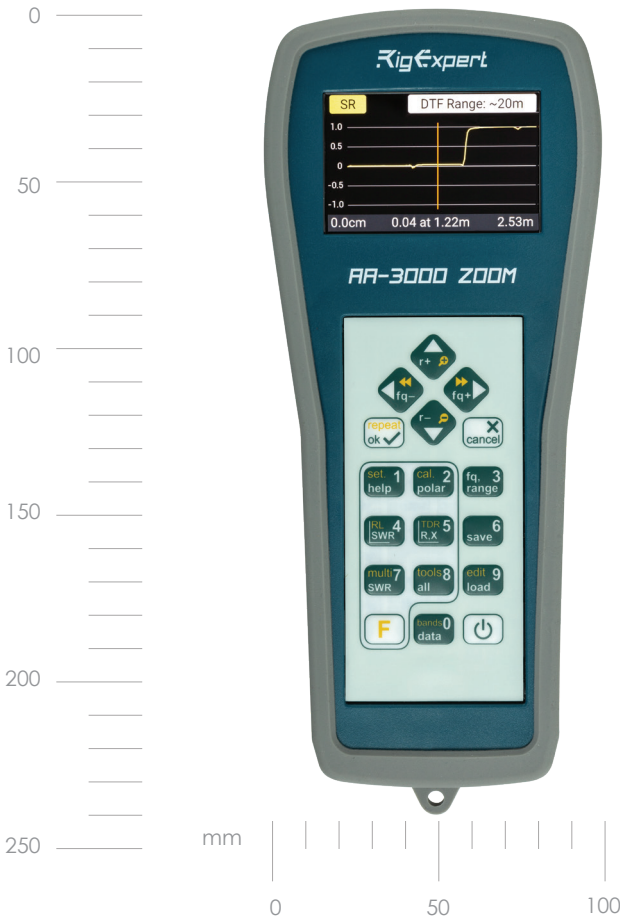
## RigExpert AA-3000 ZOOM

### Go beyond the Earth

Factory calibrated analyzer is designed for checking and tuning UHF systems up to 3 GHz!

Expand measurement boundaries and functionality with PRO-level tool.

Explore every graph detail on a large screen with ZOOM function even in direct sunlight.





## RigExpert AA-3000 ZOOM

<b>Frequency range</b>	0.1 up to 3000 MHz
<b>Frequency entry</b>	1 kHz
<b>Measurement for</b>	12.5, 25, 28, 37, 50, 75, 100, 150, 200, 300, 450, 600 Ohm systems
<b>SWR measurement range</b>	1 to 100 in numerical modes, 1 to 10 in chart modes
<b>R and X range</b>	0...10 000, -10 000...10 000 in numerical modes, 0.. 1 000, -1 000... 1 000 in chart modes
<b>Display modes</b>	SWR at single or multiple frequencies SWR, return loss, R, X,  Z , L, Cat single frequency SWR chart, 20 to 500 points   R, X chart, 20 to 500 points Smith chart, 20 to 500 points   Return loss chart, 20 to 500 points TDR (Time Domain Reflectometer) chart Cable tools (loss and characteristic impedance) Optional open-short-load calibration. Multie mode - to check your multiband antenna promptly
<b>RF output</b>	Connector: N-type Output signal shape: square Output power: -10 dBm (at 50 Ohm load)
<b>Power</b>	Three 1.5V alkaline batteries, type AA Three 1.2V Ni-MH batteries, type AA   Three 3.7V LiPo batteries, 14200 Max. 4 hours of continuous measurement, max. 2 days in standby mode when fully charged batteries are used. When the analyzer is connected to a PC or a DC adapter with a USB socket, it takes power from these sources
<b>Interface</b>	USB connection to personal computer 400x800 color BlauView display 6x3 keys on the water-proof keypad Menus and help screens in English (standard), French, Italian, Japanese, Ukrainian, Portuguese, Spanish and German Bluetooth v. 4.2 (Single-mode, Class B)
<b>Dimensions</b>	100 × 230 × 55 mm, (4 × 9 × 2 inch)
<b>Operating temperature</b>	0...40 °C (32...104 °F)
<b>Weight</b>	650g (23 oz) with battery

**NOTE:**

All specifications could be changed without notice.

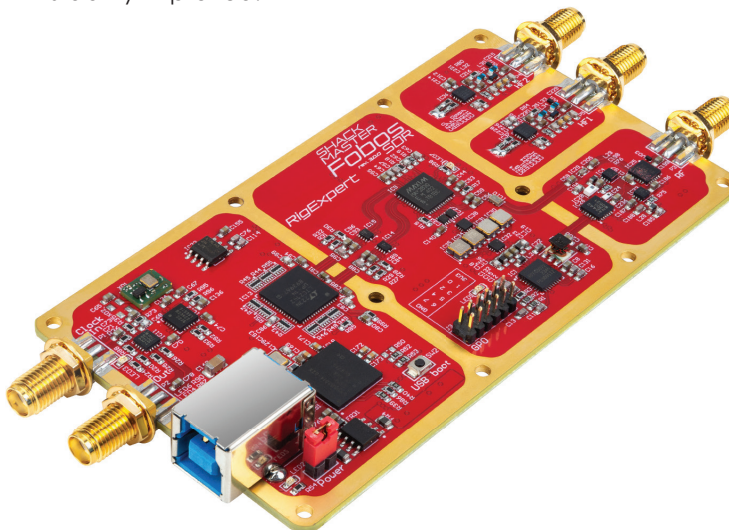
## Fobos SDR

<b>Broad main frequency range</b>	continuous 50 MHz to 6 GHz coverage
<b>Two auxiliary coherent direct sampling channels</b>	100 kHz to 25 MHz coverage, suitable for diversity reception, correlation and phase-difference direction finding
<b>Overall frequency coverage</b>	100 kHz to 6 GHz
<b>50 MHz sampling bandwidth</b>	50 M samples per second IQ rate or 2×25 M samples per second direct sampling rate
<b>High-quality signal conversion</b>	double heterodyne, 14-bit sample depth analog to digital conversion (ADC).
<b>Continuous data stream</b>	digitized data with no dropped buffers, uninterrupted recording and real-time analysis
<b>All the features simultaneously, no "either-or"</b>	50 MHz rate, and 14-bit ADC and continuous data stream within continuous frequency coverage

### NOTE:

Fobos SDR has a 14 GHz per second best in class Band Scan feature

- 8 lines GPO port (general purpose output – software-controlled digital outputs) added to control an external equipments.
- The low-pass filters for HF1 and HF2 inputs designed with cutoff frequency of 24 MHz.
- USB data link stability improved.



Fobos SDR

Frequency range	100 kHz - 30 MHz (direct sampling) 30 MHz - 6 GHz (double heterodyne)
IQ sample rate (bandwidth)	Up to 50 MHz
ADC resolution	14 bit
Frequency stability	±0.5 ppm
PCB dimensions	110 mm x 60 mm
Outline dimensions	130 mm x 60 mm x 16 mm



# Shackmaster Power 600


High-Quality DC power supply designed to ensure stable and adjustable 13.8V voltage

- Adjustable output voltage, 12-15V, MAX 40A
- Deadly Quiet
- Highly Efficient
- Lightweight and Compact
- DXpeditions Compatible
- Tolerant to gasoline generators
- Saves workspace due to flexible orientation
- 4 USB ports with Quick Charge 2.0
- Easy touchscreen operation. Free ShackPower SW for PC lets you configure Power 600 and view parameters graphically.




Applications

- Mechanical & electrical equipment sourcing
- Low noise low power amplifiers
- Power sourcing for PoE systems
- Amateur radio
- Lab equipment
- Telecom
- DIY

 **Slick Flexibility**  
The flexible orientation and multiple connectivity options make it easy to use.

 **Silent Quiet Operation**  
The low EMI and acoustic noise minimize distractions.

 **Supply**  
Supply Potent Power Delivery: Revel in an amped-up 600W power output. Nonstop rapid charging: 4 USB ports with Quick Charge QS2.0 Safety: The Intelligent Protection System protects your devices from damage. Custom voltage setting: Adjustable Output Voltage allows easy modification of the power supply to match the characteristics of different devices.

Rated power	600W
Rated current	40A
Output voltage	13.8V (12-15V Software adjustable)
Input AC voltage	80V to 264V
Input AC frequency	47Hz to 63Hz
Operating temperature range	-20°C to +70°C -4°F to 158°F
Acoustic noise	~21 dBa
Overvoltage protection	Yes
Overtemperature protection	Yes
Overcurrent protection	Yes
Short circuit protection	Yes

AC current (maximum)	6.4A @ 115VAC 3.2A @ 230VAC
EMC	EN IEC 61000-6-3:2021 EN IEC 61000-6-1:2019
Ripple (maximum)	200mVp-p
Storage temperature range	-40°C to +85°C -40°F to 185°F
Inrush current (maximum)	40A @ 115VAC; 80A @ 230VAC
USB Charging Ports	5V/2.5A, 9V/2.5A, 12V/2.5A
Dimensions	172mm x 55mm x 185mm 6.8" x 2" x
Weight	1.1kg 2 lb 7oz

**Note:**  
All specifications could be changed without notice.

# Shackmaster OSL kit

OSL (Open-Short-Load)  
Calibration Set



**Tune in for easy calibration!**

The kit is designed to calibrate your equipment in the DC to 2.5 GHz frequency range. Carry it in your pocket, work in the field and control it freely thanks to the swivel design.

Number of connectors	3
Connector type	N male 50 Ohm
Frequency range	DC(direct current) to 2,5 GHz
Power	250 mVt
Return Loss	-22 dB @ 3 GHz -31 dB @ DC to 1,5GHz
Resistance DC	50 Omh
Operating temperature range	-15°C to +55°C
Storage temperature range	-40°C to +85°C
Weight	110 g
Dimensions	49 x 84.6 x 25 mm

**NOTE:**  
All specifications could be changed without notice.

# POWER MEASUREMENT TOOL AND LOGGER

REAMP

The REAMP is the best choice for your Ultra Low Power projects and IoT developments. REAMP measures ultra-low current and voltage and functions as a highly stable and accurate power source for Device Under the Test.

Comprehensive power consumption analysis with REAMP PC Software (diagrams, data recording, saving data log files)

- Easy navigation both for small or extremely large measurement data sets, zooming and scrolling features
- Consumption averaging as well as real-time analysis
- Battery Life Calculator
- Ready-to-use Multi-OS software for Windows®, Linux® and macOS®



Number of measuring channels	3
Measuring range	Current - from 10µA to 1A (1 channel) Voltage - from 0V to 5V (2 channels)
Sample rate	10 Hz...10 kHz (10 kHz one channel only)
Measuring results displaying	Instant values graph Average values in digits format Saving data to a log Easy navigation using horizontal and vertical zooming
Power supply	USB port of PC Additional built-in Li-ion battery for using when current consumption is over 500 mA
Interface	USB connection to PC (USB 2.0, USB 3.0) Operation system Windows 7, Windows 8, Windows 10, macOS, Linux (Ubuntu) Support for 3 languages (EN, UA, RU) Application software «RigExpert AMP Loggen»
Dimensions	67 x 57 x 27 mm

**NOTE:**  
All specifications could be changed without notice.



# RigExpert MRB-M4



**The Li-Ion battery for Motorola DPxx mobile radio with fast charging QC2.0 USB Type-C** is designed for extreme environment usage.

- Stay connected: up to 38 hours on one charge
- Charge fast: 90% capacity in 90 minutes
- Battery status RGB LED indication (activated by pressing the Status Check Button)
- Don't lose control: charge the radio without turning it off
- Be autonomous: charge even from a powerbank on the go
- Successfully passed testing at SE "Ukrmetrteststandart"

<b>Rated capacity</b>	4920mAh, 37BWh
<b>Nominal output voltage</b>	7.4V
<b>Battery type</b>	Li-ion LG INR21700M50LT
<b>Charging protocol</b>	BCP1.2, QC2.0
<b>Charging port</b>	USB Type-C (IP 65)
<b>Nominal charging current</b>	2A
<b>Maximum charging current</b>	3.0A
<b>Nominal discharging current</b>	1.5A
<b>Discharge current protection</b>	9.25A
<b>Operation temperature</b>	-20°C to +60°C
<b>Charge temperature range</b>	0°C to +45°C
<b>Battery protection level</b>	IP 65
<b>Expected Life Cycle</b>	After 1000 cycles, more than 80% capacity is retained (under the condition of operation at t=+25°C and nominal charge/discharge currents)
<b>Compatibility</b>	Motorola DP4400, DP4600, DP4800, DP4401, DP4601, DP4801, DP4000e Series, DP2000e Series
<b>Dimensions</b>	113,6 x 55,2 x 33,9 mm
<b>Weight</b>	206g

**NOTE:**

All specifications could be changed without notice.

RigExpert MRB-MR7



**The Li-Ion battery for Motorola R7 handy-talkie with fast charging QC2.0 USB Type-C** is designed for reliable communication in extreme environment.

- Stay connected: the radio is on during the charge
- Type-C connector on the top panel allows you to charge the battery when the radio is on
- Battery status RGB LED indication (activated by pressing the Status Check Button)
- Fully compatible with Motorola chargers
- Quick Charge: 90% capacity in 90 minutes

Rated capacity	4920mAh, 37Wh
Nominal output voltage	7.4V
Battery type	Samsung INR21700-50S
Charging protocol	BCP1.2, QC2.0
Charging port	USB Type-C (IP 65)
Nominal charging current	2A
Maximum charging current	3.0A
Nominal discharging current	1.5A
Discharge current protection	9.25A
Operation temperature	-20°C to +60°C
Charge temperature range	0°C to +45°C
Battery protection level	IP 65
Expected Life Cycle	After 1000 cycles, more than 80% capacity is retained (under the condition of operation at t=+25°C and nominal charge/ discharge currents)
Compatibility	Motorola R7 series
Dimensions	118,5 x 54,7 x 34 mm
Weight	204g

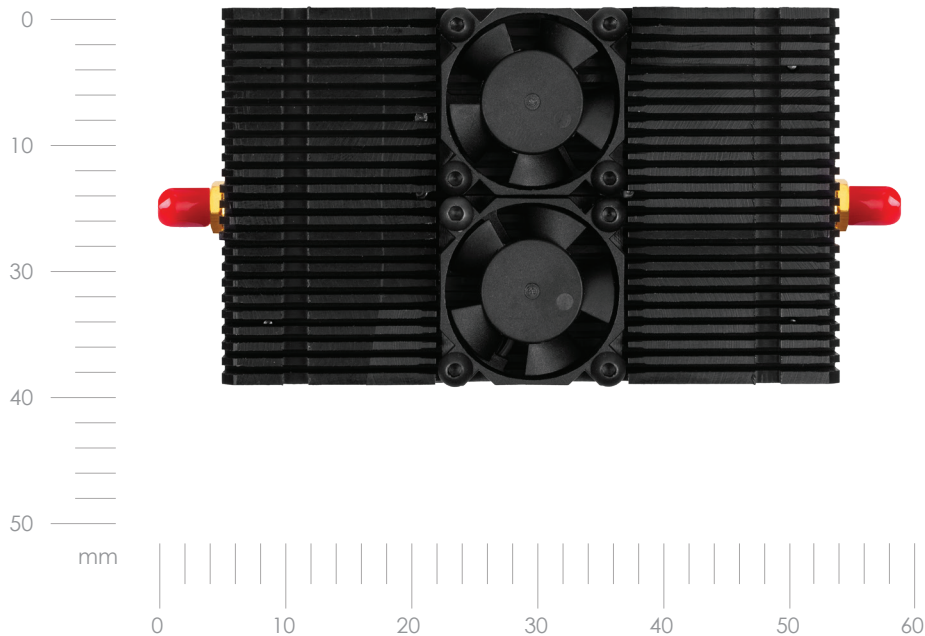
**NOTE:**  
All specifications could be changed without notice.

# RigExpert WGPA500

## Ultra-Wideband GAN Power Bi-directional Rx/T amplifier

Range 100 MHz – 1200 MHz GHz. Designed specifically for use in devices with 10V operating power.

Application areas: Automatic switching (VOX) between receive and transmit modes UAV / Drone control systems, amateur radio (HAM), IoT / wireless sensor networks, lab testing & RF measurements, radio broadcasting / data transmission, mobile base or temporary communication stations, EMC / interference testing – simulating, radio telemetry systems, unmanned ground vehicles (UGVs)



### Dimensions and weight

Dimensions, mm	100 × 55 × 60
Weight, g	337

Important note:  
1 – For lower frequency bands, with power limited to 8 W.

## RigExpert WGP A500

<b>Operating frequency range</b>	100 MHz – 1200 MHz
<b>Impedance</b>	50 $\Omega$
<b>Built-in LPF cutoff frequency (RX/TX)</b>	1200 MHz (can be customized to customer requirements: 320, 490, 570, 630, 800, 850, 1000 MHz)
<b>Saturation power</b>	P@3dB – 13 W @ 550 MHz
<b>Average power across operating range</b>	10 W
<b>Maximum TX input level</b>	30 dBm / 1 W (can be adjusted to customer requirements from 15 to 30 dBm)
<b>RX gain (average)</b>	8.6 dB
<b>Maximum RX input level</b>	–15 dBm
<b>Switching speed between TX and RX</b>	$\leq 180$ ns
<b>Supply voltage</b>	12–24 V (recommended 18 V)
<b>Max current consumption RX mode</b>	500 mA @18 V (9 W)
<b>Max current consumption TX mode</b>	1.7 A @18 V (30 W)
<b>RF connector type</b>	SMA-F
<b>Power connector type</b>	4-pin JST PH2.0
<b>Reverse polarity protection (fuse)</b>	
<b>Active and passive cooling</b>	
<b>Operating temperature</b>	–20...+40 °C

**NOTE:**

1 – For lower frequency bands, with power limited to 8 W.

# RigExpert 2.1GPA

## 2.1 Amplifiers GHz Bi-directional Rx/T amplifier

### Small but powerful

Range 2110-2200 MHz. Designed specifically for use in devices with 5V operating power.

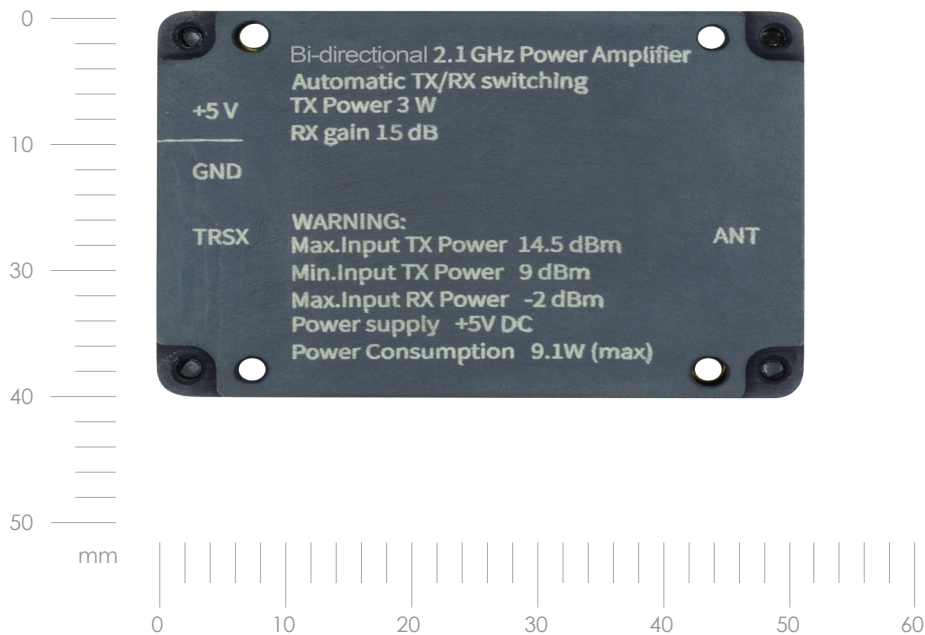
Reception gain 15 dB.

Transmission gain 20 dB.

Output power 3 W.

Automatic switching (VOX) of reception and transmission modes with adjustable VOX sensitivity level.

Application areas: amplification of UAV control signals,SDR radio, amateur radio, IoT, laboratory equipment.



### Dimensions and weight

Dimensions, mm	38x56x13
Weight, g	38

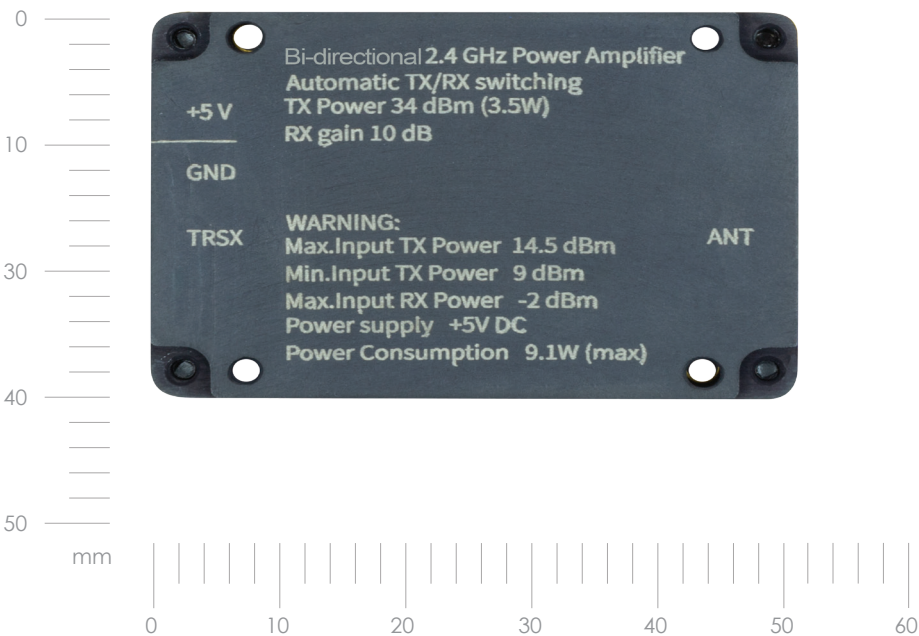
Important note:  
Maximum TX input power can be changed by replacing the input attenuator.

# RigExpert 2.4GPA

## 2.4GHz Bi-directional amplifier

### Small but powerful

Intended for signal amplification when used for UAVs, ham radio, IoT, and measurements.  
Guaranteed conformance to stated specs.



### Dimensions and weight

Dimensions, mm	40x56x15
Weight, g	51

Important note:  
Maximum TX input power can be changed by replacing the input attenuator.



## RigExpert 2.4GPA

## Absolute Maximum Ratings

Parameter	Rating
Min RF Input TX Power	9 dBm
Max RF Input TX Power	14.5 dBm
Max RF Input RX Power	-2 dBm
Device Voltage	5.5 V

## Recommended Operating Conditions

Parameter	Min.	Typical	Max.	Units
RF Input TX Power	9	13	14.5	dBm
Device Voltage	+4.75	+5	+5.25	V

## Electrical Specifications

Parameter	Conditions	Min.	Typical	Max.	Units
Frequency Range		2000		2600	MHz
TX Gain			22		dB
RX Gain			10		dB
Output Power CW	Input RF Power 13dBm @ 2.4 GHz	33.5	34.5	35	dBm
Output Power Pulse	Input RF Power 13dBm @ 2.4 GHz	34	35	36	dBm
2nd Harmonic CW	Output Power 34.4dBm @ 2.4 GHz		0		dBm
2nd Harmonic Pulse	Output Power 35dBm @ 2.4 GHz		2		dBm
Power Consumption in CW	Input RF Power 13dBm @ 2.4 GHz		9.1		W
Power Consumption in RX			0.3		W

**NOTE:**

All specifications could be changed without notice.

RigExpert 770MPA

**Bidirectional amplifier 770 MHz**

Designed specifically for use in devices with 5 V operating power supply.

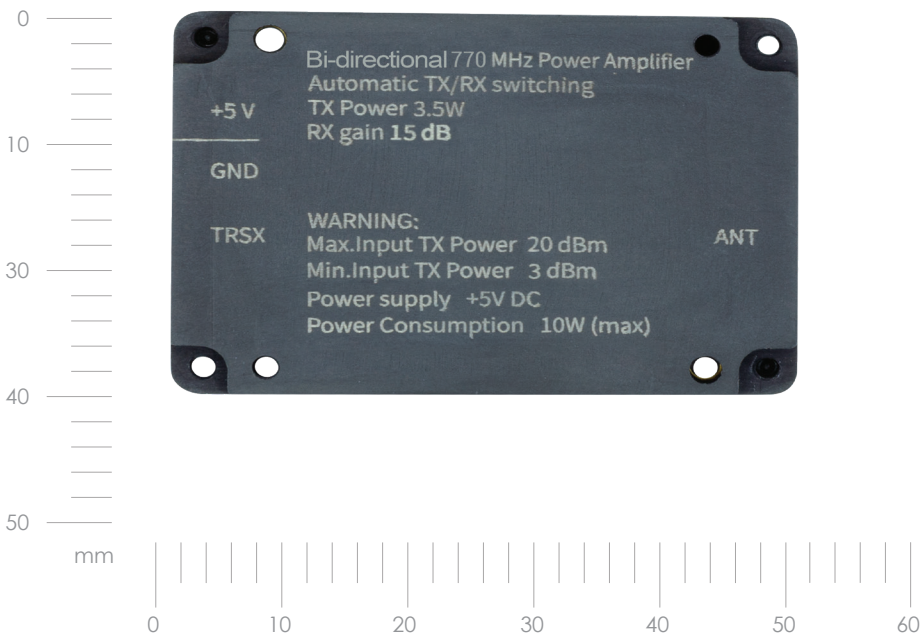
Designed to amplify UAV control signals,  
SDR radio, amateur radio, IoT and laboratory equipment.

Receive gain 15 dB.

Transmit gain 20 dB.

Automatic switching (VOX) of receive and transmit modes.

- ESD/EMI shield
- Passive cooling
- Convenient MMCX connectors



**Dimensions and weight**

Dimensions, mm	38x56x13
Weight, g	38

Important note:  
Maximum TX input power can be  
changed by replacing the input attenuator.

# RigExpert 770MPA

## Absolute Maximum Ratings

Parameter	Rating
Min RF Input TX Power	3 dBm
Device Voltage	5.25 V

## Recommended Operating Conditions

Parameter	Min.	Typical	Max.	Units
RF Input TX Power	3		20	dBm
Device Voltage	+4.75	+5	+5.25	V

## Electrical Specifications

Parameter	Conditions	Min.	Typical	Max.	Units
Frequency Range		740		810	MHz
TX Gain 740-810 MHz		18	20	22	dB
RX Gain		13	15	15,96	dB
Output Power CW	Input RF Power 20dBm @ 750 MHz		2.82		W
Output Power Pulse	Input RF Power 20dBm @ 750 MHz		3.53		W
Power Consumption in RX			0.4		W
Power Consumption in TX			10		W

**Attention:** Laboratory tests were conducted with a 5.00 V power supply and a temperature of +22°C.

**NOTE:**

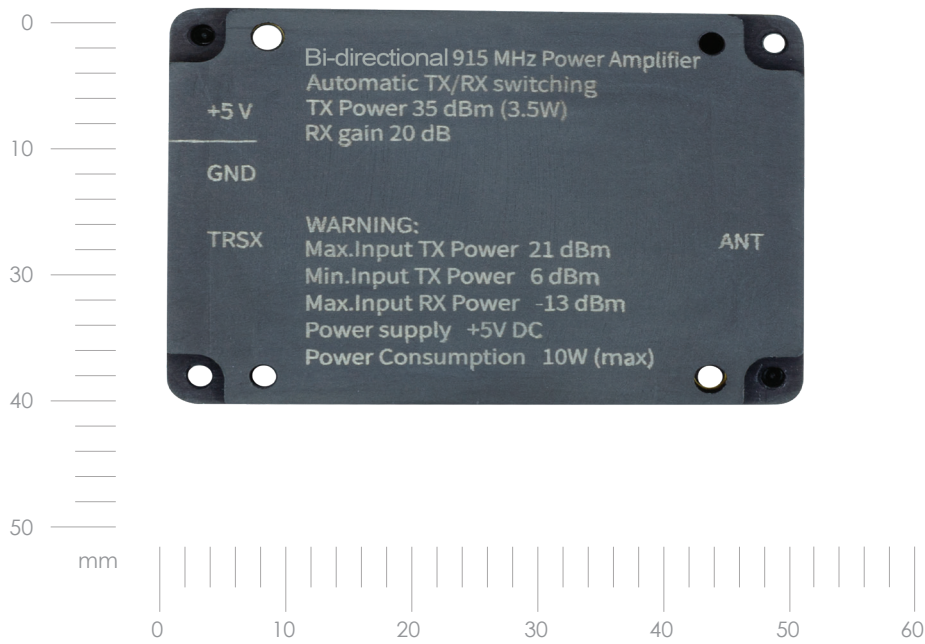
All specifications could be changed without notice.

RigExpert 915MPA

915MHz Bi-directional amplifier.

Guaranteed conformance to stated specs

Intended for signal amplification when used for UAVs, ham radio, IoT, and measurements.  
RX gain 20 dB . TX gain 15 dB.



Dimensions and weight

Dimensions, mm	40x56x15
Weight, g	51

Important note:  
Maximum TX input power can be changed by replacing the input attenuator.

# RigExpert 915MPA

## Absolute Maximum Ratings

Parameter	Rating
Min RF Input TX Power	6 dBm
Max RF Input TX Power	21 dBm
Max RF Input RX Power	-13 dBm
Device Voltage	5.5 V

## Recommended Operating Conditions

Parameter	Min.	Typical	Max.	Units
RF Input TX Power	6	20	21	dBm
Device Voltage	+4.75	+5	+5.25	V

## Electrical Specifications

Parameter	Conditions	Min.	Typical	Max.	Units
Frequency Range		902		928	MHz
TX gain			15		dB
RX gain			20	22	dB
Output Power CW	Input RF Power 20dBm @ 916 MHz	34	35	36	dBm
Output Power Pulse	Input RF Power 20dBm @ 916 MHz	35	35.5	36	dBm
2nd Harmonic CW	Output Power 35.1dBm @ 915 MHz		1.3		dBm
2nd Harmonic Pulse	Output Power 36.6dBm @ 915 MHz		1.9		dBm
Power Consumption in RX	Output RF Power 35dBm @ 916 MHz		9.8		W

**NOTE:**

All specifications could be changed without notice.

# RigExpert 5.8G Minigun

## 5.8G Minigun Antena

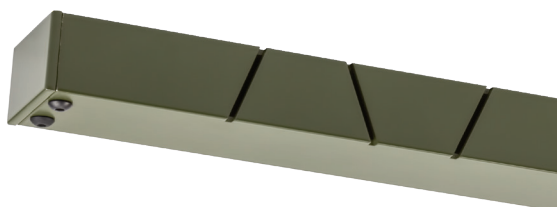
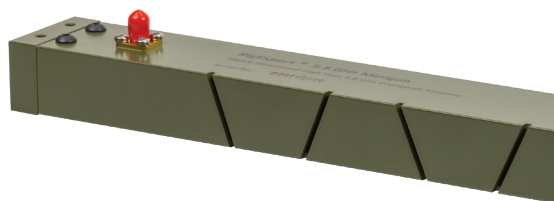
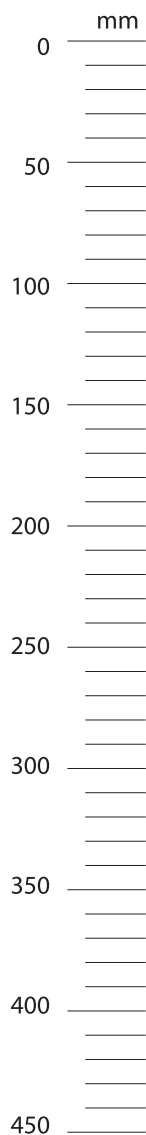
### Level up your drone control

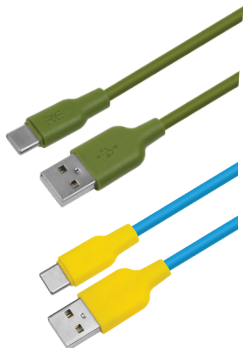
Provides stable connection over longer distances due to directional characteristics and additional signal amplification.

Antenna type	Slot Antenna Array
Frequency range	5725 MHz до 5875 MHz
Connector type	SMA (female)
Impedance	50 Ohm
Maximum power	250 W
Gain	15 dBi
SWR	< 1.5
Polarization	Linear (Vertical)
Radiation pattern	H-Plane 90°, V-Plane 8°
Mounting	1/4" screw
Dimensions	40 mm x 25 mm x 450 mm
Weight	400g (14 Oz)

**NOTE:**  
All specifications could be changed without notice.

## RigExpert 5.8G Minigun





### Silicon USB Type A - Type C cable

#### **Frost-resistant and highly flexible**

This cable is designed for fast charging of devices with Type C.

Maintains its integrity and functionality even under extreme bending and prolonged temperature up to -15°.

Available colors: Military green and Blue



### Silicon case

#### **Protect your analyzer**

The silicone cover is intended for additional protection of AA-650 ZOOM, AA-1500 ZOOM, AA-2000 ZOOM analyzers from dust, moisture and adverse weather conditions. Comes complete with AA-3000 ZOOM.

*Note: Please note that the case does not cover the front panel of the analyzer.*





## Lanyard for the Stick analyzer

### Free your hands for radio communication

The lanyard is intended for carrying the analyzer around the neck.

Suitable for mounting any antenna analyzer from the Stick line.



## Holster for the Stick analyzer

### Cover YOUR Stick!

The holster is designed to carry and protect the Stick analyzer.

Use it for field work and free your hands for more productivity.

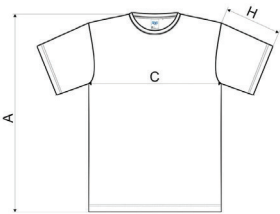
# RigExpert T-Shirt “I’m fine”

Brighten up your wardrobe with this black t-shirt, showcasing a clever SWR meter graphic that playfully declares “I’m fine.” This tech-inspired design adds a touch of humor to keep spirits high, even during tough times.

Perfect for tech enthusiasts and anyone who appreciates a good laugh with their fashion.

Graphic dimensions: 26 x 23.5 cm.

Available in sizes from S to XXL.



Size chart, cm.

Size	S	M	L	XL	2XL
A	70	72	74	76	78
C	47	51	55	59	64
X	19.5	20.5	21.5	22.5	23.5

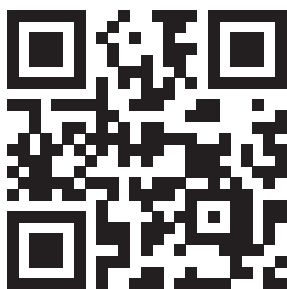


- Reliability is embedded in the DNA of RigExpert devices.
- Every RigExpert device goes through four phases of quality control before entering the sales representative warehouse.
- Therefore, we are confident in the quality of our products and offer a two-year replacement of the device instead of repair.
- We don't take any risks and you only win.

### RigExpert Club

#### Join RigExpert Club to get significant benefits:

- Additional 1 year replacement warranty from RigExpertCare
- Special promotions and offers
- Chance to win a gift certificate



To participate in the new support program, you need to purchase one of our **Shackmaster Power 600** or **MATCH** devices and use the RigExpert Club card found inside the box:

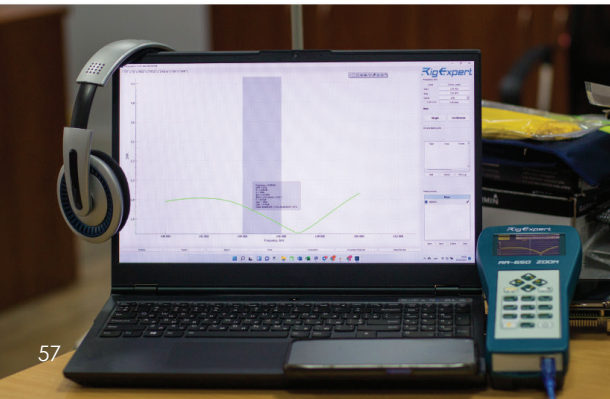
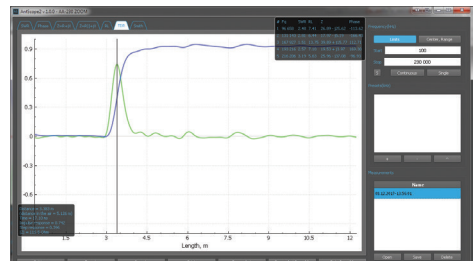
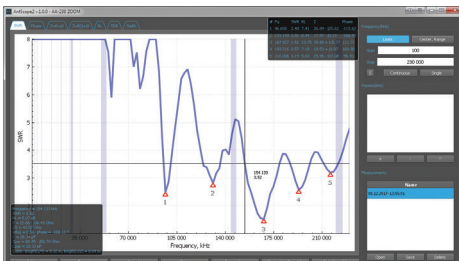
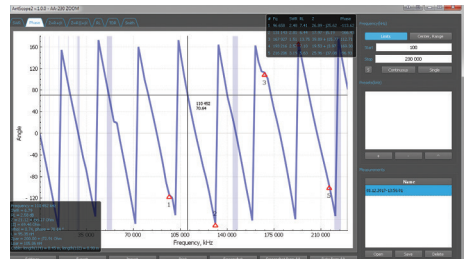
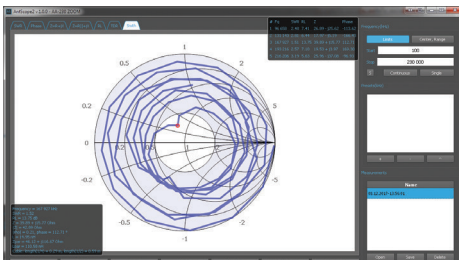
**Scan OR-code** on the Club card with a smartphone/tablet » You can see a Registration form » Fill it down » You will get a notification:

**«Congratulatory You have Joined the RigExpert Club»**

Link for registration <https://rigexpert.com/login/>

## AntScope2 and mobile versions of AntScope

The free AntScope software is designed to support various models of RigExpert antenna analyzers on your computer (Windows, Linux, MAC OS) and on smartphones, tablets, Apple.





## MixW4

### **Three-in-one radio amateur software: Logger, Digital, Contests**

Multi-mode multi-platform software for radio amateurs. Numerous new features including FT8, FT4, KiwiSDR modes, and external RX support.

### **Important features of MixW4:**

- Three-in-one (Logger, Digital, Contests)
- KiwiSDR support
- Digital mods including FT8 and FT4 with proprietary digital signal processing algorithms
- Unique CW software algorithm with fine-tuning for solid (FB) signal
- User manual in English, Dutch, and German languages
- Convenient interface with the ability to multi-window, customize fonts, and display
- A wide range of macros allowing for faster communication
- Contest mode with support for modules with extended statistics - you can write contest modules yourself
- User-Defined Contest - take part in any contest
- Simple scripting programming language to write additional modules and statistics by yourself
- Technical support by e-mail (response time no more than 24 hours considering WorldWide service)



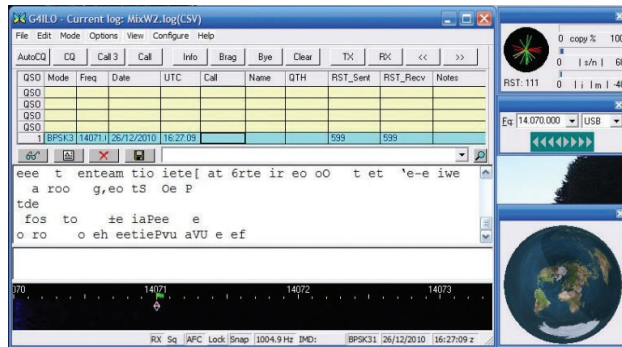


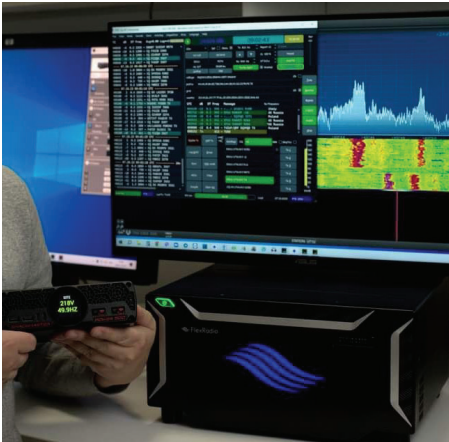
## MixW3

The Legendary Software for radio amateurs

Three in One: Logger, Digital, Contests

You can download and purchase it from  
<http://mixw.net/>





## Software for REAMP

### Full Measure with Ease

With free software, you gain extensive capabilities for recording and analyzing the data measured by the REAMP device. Additionally, you can conveniently configure the device for optimal performance.

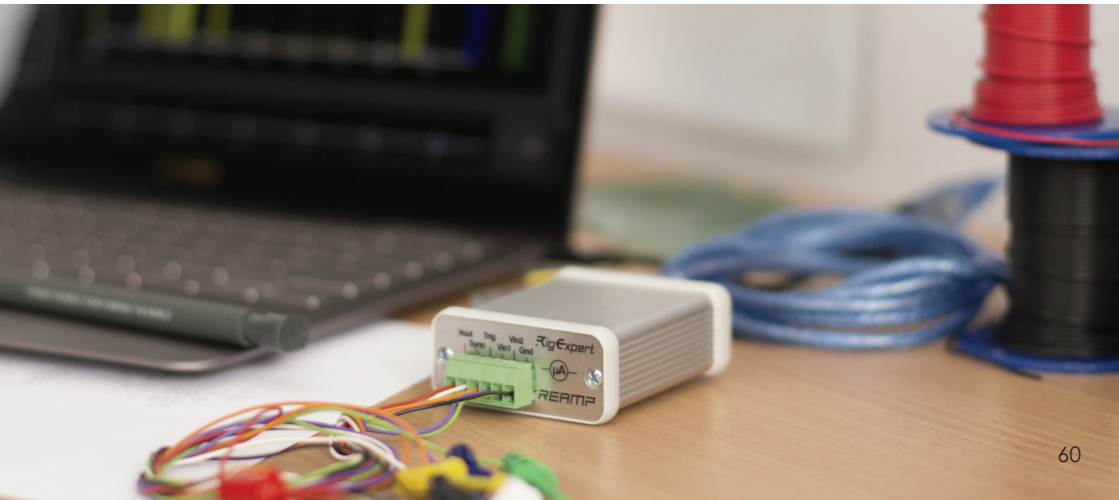
Download the software to your laptop or desktop computer and choose your preferred data collection method and mode. Move and scale data on the screen for the most convenient display.

## Software for Shackmaster Power 600

### Full Control & Stabilization

The free ShackPower software is designed for quick setup of operating modes for the ShackMaster Power 600 power supply unit, providing complete control over the current and voltage consumption of connected devices.

Download the software to your laptop or computer and select the operating mode for your power supply. Access real-time graphs of current consumption, voltage, and temperature parameters. Maximize the lifespan of your devices and stabilize your system.





## Fobos SDR

### API Library

The interaction between the Fobos SDR receiver and other application software is based on the open-source, cross-platform, compact, and easy-to-use **libfobos** API library.

### Usage Examples

Examples of using the **libfobos** library in application software are available with full source codes for programming languages **C, C++, C#, and Delphi/Pascal**.

### Third-Party Software Support

The most popular programs and libraries are already supported and can work with the Fobos SDR receiver through dedicated plugins, including: **SDRSharp, GnuRadio, HDSDR ExtIO, SDRPlusPlus, uSDR, SoapySDR**.

All plugin source codes are available on our **GitHub** page and can be used to quickly get started with the **Fobos SDR** receiver and its **libfobos** library.

### Key Software Features:

- **Device detection & selection** – Lists connected devices and allows selection from the list.
- **Device & library information** – Displays detailed information about the receiver and API.
- **Comprehensive settings** – Configure all parameters, including frequency, sample rate, and gain.
- **Input & mode selection** – Choose input sources and operational modes.
- **Signal digitization & data transmission** – Convert analog signals and send data to a computer.
- **Clock source selection** – Configure the clock signal source.
- **Ultra fast band scan** – 14 GHz per second
- **GPO line control** – Manage General Purpose Output (GPO) lines.

All **plugin source codes** are available on our **GitHub page**, enabling fast and efficient integration of the **Fobos SDR** receiver with the **libfobos** API library.



Follow our GitHub repos and get inspiration for your work  
<https://github.com/rigexpert>



Visit our server and download portable software distributions with built in Fobos SDR support <https://rigexpert.com/files/software/FobosSDR/>



Download and evaluate the  $\mu$ SDR software with Fobos SDR API native support. <https://sourceforge.net/projects/u-sdr/>

## WHERE TO BUY

**RigExpert**

**SHACK  
MASTER**

### North America

**www.rigexpert.net**  
716-240-2597

**www.gigaparts.com**  
866-535-4442

**www.antennapartsoutlet.com**  
815-244-3500

**www.gpscentral.ca**  
800-585-9331

**www.dxengineering.com**  
1-800-777-0703

**www.randl.com**  
800-221-77-35

**www.radioworld.ca**  
416-667-1000

**www.hamradio.com**  
714-533-7373

**www.scharfindustries.com**  
888-964-8388

**www.henryradio.com**  
310-463-1859

**www.cricketventures.com**

### Europe

**www.k-po.com**  
386-423-16129

**www.moonrakeronline.com**  
4419-0828-1705

**www.astroradio.com**  
9373-534-56

**www.mobimax.bg**  
3598-9993-0303

**www.inradio.pl**  
4842-6492-828

**www.limmared.nu**  
4603-2566-0660

**www.zenithantennes.fr**  
3367-9419-680

**www.matra-systems.ro**  
0214-561-074

**www.bmtel.it**  
3903-1431-0299

**www.wimo.com**  
490-7276-96-680

**www.willtron.at**  
4322-5225-280-420

**www.novatel.com.fr**  
9021-2438-0286

**www.dmtonline.dk**  
4598-461-333

**www.konektor5000.pl**  
4842-671-9807

**www.hspshop.it**  
3908-7156-0100

**www.hamradioshop.it**  
0776-520-129

**www.simarud.no**  
**www.permo.no**  
4764-9180-80

**www.pcs-electronics.com**  
3864-231-6129

**www.miftelecomunicaciones.com**  
922 354 463

**www.atlas-communications.ch**  
4191- 683- 0140

**www.rxtx-tuote.fi**  
0453-4041-35

**www.ercomer.pl**  
4822-270-1215

**www.ddamtek.cz**  
4207-7711-4070

**www.paolettiradiocomunicazioni.it**  
3905-5319-367

**www.radiofrequenzashop.com**  
0324-9720-784

**RigExpert**

**SHACK  
MASTER**

### Asia and Middle Asia

**www.tenmetershop.com**  
6626-239-024

**www.cbstar.kz**  
7727-3006-530

**www.hnt.jp**  
8105-5260-7655

**asin.redtea@msa.hinet.net**  
8863-364-6700

**www.wxidianjin.com**  
1801-8345-013

**www.measuretronix.com,**  
6625-141-000

**www.yaesu.ph**  
**www.eibradio.com**  
6391-7852-0474

**www.wavenix.com**

**www.eibradio.com**  
0917-852-0474

### Middle East and Africa

**laveei@gmail.com**  
9724-8331-306

**compasshouse@yahoo.com**  
9665-5555-1600

**info@alfatelecom.com.qa**  
9744-4324-446/7

**www.frequencyfanatics.co.za**  
27-71-676-1763

### South America

**www.duochile.cl**  
5622-8405-278

**www.radiohaus.com.br**  
5519-3894-2677

**www.ham-radio-brothers.negocio.site**  
1998-323-5341

### Oceania

**info@electrotest.co.nz**  
6494-482-600

# CONTACTS

## **Rig Expert Ukraine Ltd.**

Solomyanska Square, 2, office 918, Kyiv, 03035

Ukraine, tel: +380 44 353 92 42

e-mail: [office@rigexpert.com](mailto:office@rigexpert.com)

web: [www.rigexpert.com](http://www.rigexpert.com)

facebook: [@RigExpertUkraineLtd](https://www.facebook.com/RigExpertUkraineLtd)

instagram: [@rig\\_expert\\_ukraine\\_ltd](https://www.instagram.com/rig_expert_ukraine_ltd)

**Made in Ukraine**

