

RigExpert

Every rig needs an expert

PRODUCT CATALOG



TABLE OF CONTENTS

NEW devices by RigExpert	3	MRB-M4	36
MATCH	10	MRB-MR7.....	38
Stick 230	12	2.1GPA-LD	40
Stick 500	14	2.4 GPA	41
Stick Pro	16	770 MPA-LD	43
Stick XPro	18	915 MPA.....	45
AA-650 Zoom	20	5.8 G Minigun.....	47
AA-1500 Zoom	22	ACCESSORIES	49
AA-2000 Zoom	24	WARRANTY	52
AA-3000 Zoom	26	RigExpert Club	53
Fobos SDR	28	SOFTWARE	54
ShackMaster Power 600	30	WHERE TO BUY.....	59
ShackMaster OSL kit	32	CONTACTS	60
REAMP.....	34		

New devices by RigiExpert

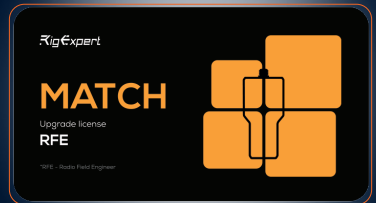


MATCH
Upgradeable Antenna
and Cable Analyzer
up to 70 MHz

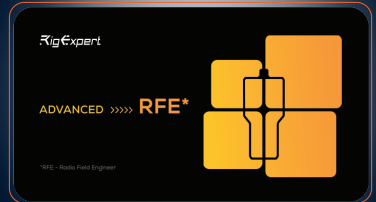
ADVANCED
License
up to 230 MHz



RFE
License
up to 500 MHz



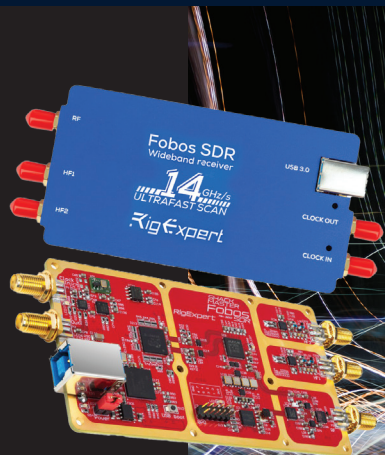
ADVANCED TO RFE*
License
up to 500 MHz



*RFE - Radio-Field Engineer

Fobos SDR

Wideband
SDR Receiver



MATCH:

The Future of Antenna and Cable Analysis



Start with the MATCH Base Model

MATCH Base model lays a strong foundation for all your antenna and cable analysis needs. Base model – it is a MATCH device with preinstalled coverage 0.1-70 MHz and important features.

MATCH can be enhanced with licenses to expand frequency up to 230 MHz with the Advanced license and 500 MHz with the RFE license.

It provides the essential tools and features to get started with precision and reliability. Designed to be user-friendly and effective, the MATCH Base model offers everything needed to analyze and fine-tune antennas and cables for both beginners and professionals alike.

As your needs evolve, MATCH grows with you through its **2 upgradeable licenses**



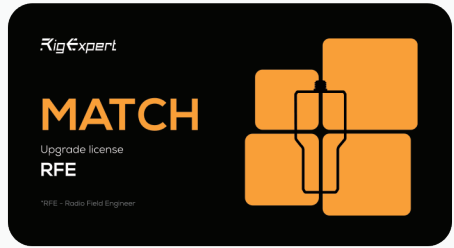
Advanced License: up to 230 MHz



Key Features:

- **Advanced Modes:** Includes the Smith Chart and Multiband Mode for tracking and comparing antenna performance. Multé Mode evaluates HAM bands with a star rating for quick performance insights. Quick Band Access ensures faster navigation to selected bands.
- **Advanced Tools:** Includes Stub Tuner, Cable Loss, Length vs VF, Cable Impedance, and OSL Calibration for precise adjustments.
- **Bluetooth Connectivity:** Wireless data management for seamless operation.

RFE License: up to 500 MHz



Key Features:

- **Extended Frequency Range:** Coverage up to 500 MHz, perfect for complex RF systems.
- **TDRChartMode:** Locate faults in cables with Time Domain Reflectometry (TDR), calculating Distance to Fault (DTF) and analyzing fault characteristics.
- **LC Meter:** enabling precise measurements of Inductance (L), Capacitance (C), Quality Factor (Q), and Loss Tangent ($\tan \delta$).
- **User OSL Profiles:** Supports up to 10 custom Open-Short-Load (OSL) profiles for precise calibration.



**Make the switch from
Advanced to RFE License
hassle-free with our
Advanced to RFE license.**

**Just need to pay the
difference**

Fobos

Wideband SDR Receiver



GUD FR U

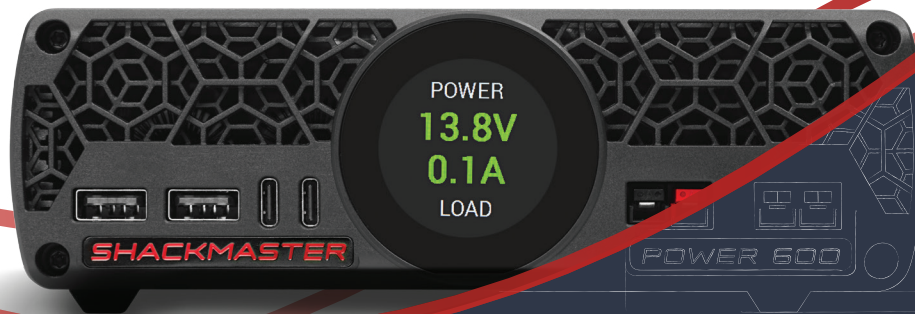
Broad main frequency range	continuous 50 MHz to 6 GHz coverage
Two auxiliary coherent direct sampling channels	100 kHz to 25 MHz coverage, suitable for diversity reception, correlation and phase-difference direction finding
Overall frequency coverage	100 kHz to 6 GHz
50 MHz sampling bandwidth	50 M samples per second IQ rate or 2×25 M samples per second direct sampling rate
High-quality signal conversion	double heterodyne, 14-bit sample depth analog to digital conversion (ADC).
Continuous data stream	digitized data with no dropped buffers, uninterrupted recording and real-time analysis
All the features simultaneously, no "either-or"	50 MHz rate, and 14-bit ADC and continuous data stream within continuous frequency coverage

- 8 lines GPO port (general purpose output – software-controlled digital outputs) added to control an external equipments.
- The low-pass filters for HF1 and HF2 inputs designed with cutoff frequency of 24 MHz.
- USB data link stability improved.

**Fobos SDR has a 14 GHz per second best in class
Band Scan feature**

ShackMaster power 600

High-Quality DC power supply designed to ensure stable and adjustable 13.8V voltage



- Adjustable output voltage, 12-15V, MAX 40A
- Deadly Quiet
- Highly Efficient
- Lightweight and Compact
- DXpeditions Compatible
- Tolerant to gasoline generators
- Saves workspace due to flexible orientation
- 4 USB ports with Quick Charge 2.0
- Easy touchscreen operation. Free ShackPower SW for PC lets you configure Power600 and view parameters graphically


Learn more about the ShackMaster Power 600 via the link or scan the QR code to visit the product page:


<https://rigexpert.com/power-supply/ckmaster-power-600/>



Buy a RigExpert Analyzer for Quality and Value


- User friendly multilingual interface
- Consistency and accuracy without prior recalibration
- 2-year device replacement warranty
- A soft protective case included as part of the kit





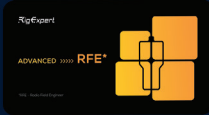
MATCH
ADVANCED

up to 70 MHz




MATCH
ADVANCED

up to 230 MHz



MATCH
RFE

up to 500 MHz



ADVANCED TO RFE*

up to 500 MHz



Stick 230
0.1 - 230 MHz AS 



Stick 500
0.1 - 500 MHz AS 



Stick Pro
0.1 - 600 MHz AS 



Stick XPro
0.1 - 1000 MHz AS 



AA-650 ZOOM
0.1 - 650 MHz AS 



AA-1500 ZOOM
0.1 - 1500 MHz AS 



AA-2000 ZOOM
0.1 - 2000 MHz AS 



AA-3000 ZOOM
0.1 - 3000 MHz AS 

ALL you want in ONE

RigExpert Cable and Antenna analyzers are renowned for their comprehensive functionality.

Measuring of SWR, Return Loss, R, X, Z, L, C, Magnitude and Phase Angle, tuning stubs and single or multiband antennas, checking cables, locating transmission lines faults - here is not a complete list of the capabilities of each device.

In addition to the extensive functionality, users of our devices note a number of very important advantages. All our devices are:

- Factory calibrated. No calibration is required prior to using the RigExpert analyzer. The user just needs to turn the device on and it is ready to go.
- Intuitive and easy to use. Menus, self-explanatory keypad markings and the built-in context sensitive helper allow the user to refer to the User's Manual rarely.
- Durable and handy. The devices enclosed in a sturdy case are renowned for their reliability thanks to careful engineering and four-stage quality control.
- Program called RigExpertCare. RigExpertCare™ means that the company replaces defective goods with the new models as soon as possible.





RigExperts MATCH

MATCH Upgradeable Antenna & Cable Analyzer – Grow Your Game!

The next-generation antenna and cable analyzer built for flexibility and performance. Designed to evolve with your needs, MATCH offers cutting-edge technology and seamless upgrades.

Start with the base model from 0.1–70 MHz or go all-in with MATCH + Advanced License (up to 230 MHz) or MATCH + RFE License (up to 500 MHz)—the choice is yours! Use an easy conversion license from Advanced to RFE.



RigExperts MATCH

Frequency range	0.1 to 70 MHz and the range can be upgraded to 230 MHz (available for Advanced license) and 500 MHz (available for RFE license)
Frequency entry	1 kHz
Measurement for	25, 50, 75, 100 Ohm
SWR measurement range	1 to 100 in numerical modes, 1 to 10 in chart modes
R and X range	0...10 000, -10 000...10 000 in numerical modes, 0.. 1 000, -1 000... 1 000 in chart modes
Display modes	<ul style="list-style-type: none"> • SWR at single or multiple frequencies • SWR, return loss, R, X, Z, L, C at single frequency • SWR chart • R, X chart • Smith chart (available for Advanced, RFE licenses) • Return loss chart • Time Domain Reflectometry (TDR) chart (available for RFE license)
RF output	Connector type: N-type Output signal shape: square Output power: +13 dBm (at 50 Ohm load)
Power	One Li-Ion battery ICR18650, 2600mAh
Interface	480x480 color TFT 4.0" LCD display 6x3 keys on the water-proof keypad Menus and help screens in English, German, French, Spanish, Portuguese, Italian, Ukrainian USB Type-C connection to a personal computer
Dimensions	93 × 207 × 37 mm (3.7 × 8.1 × 1.5 in)
Operating temperature	-10...60 °C (14...140 °F)
Weight	355±5 g (12 oz)

NOTE:

All specifications could be changed without notice.



RigExpert STICK 230

Modern and compact

Factory calibrated analyzer is designed for checking and tuning VHF systems up to 230 MHz.

Carry it in your pocket or your belt, and work in the field or at height for up to 16 hours on a single charge.

Easily read data on the screen even in direct sunlight.



RigExpert STICK 230

Frequency range	0.1 Δ 230 MHz
Frequency entry	1 kHz
Measurement for	25, 50, 75, 100, 150, 200, 300, 450 and 600 Ohm systems
SWR measurement range	1 to 100 in numerical modes, 1 to 10 in chart modes
R and X range	0...10 000, -10 000...10 000 in numerical modes, 0.. 1 000, -1 000... 1 000 in chart modes
Display modes	Multé (a quick check of multiband antennas) SWR chart, 100 points SWR, Return loss, R, X, Z, L, C, magnitude and phase angle at one frequency
RF output	Connector type: UHF (SO-239) Output signal shape: square Output power: -10 dBm (on 50 Ohm load)
Power	One 3.7V Li-Ion battery, type 18650 When the analyzer is connected to a PC or a DC adapter with USB socket, it takes power from these sources Charging time: 3 hours using the charger
Interface	200x200 monochrome e-paper display 2x3 keys on the water-proof keypad Menus and help screens in English (standard), Japanese Bluetooth: v. 4.2 BLE Single-mode Class B USB type C connection to a personal computer
Dimensions	40 x 185 x 33 mm (1.6 x 7.3 x 1.3 inch)
Operating temperature	-15° ... 40 ° C (5 ... 104 ° F)
Weight	185 g (6.5 oz) with the battery

NOTE:

All specifications could be changed without notice.



RigExpert STICK 500

UHF in your pocket

Factory calibrated analyzer is designed for checking and tuning UHF systems up to 500 MHz.

Carry it in your pocket or your belt, and work in the field or at height for up to 16 hours on a single charge.

Easily read data on the screen even in direct sunlight.



RigExpert STICK 500

Frequency range	0.1 Δo 500 MHz
Frequency entry	1 kHz
Measurement for	12.5, 25, 28, 37, 50, 75, 100, 150, 200, 300, 450, 600 Ohm systems
SWR measurement range	1 to 100 in numerical modes, 1 to 10 in chart modes
R and X range	0... 10000, -10000... 10000
Display modes	HAM (a quick check of single band antenna) Multé (a quick check of multiband antennas) OSL calibration mode SWR chart, 100 points SWR, Return loss, R, X, Z, L, C, magnitude and phase angle at one frequency
RF output	Connector type: UHF (SO-239) Output signal shape: square Output power: -10 dBm (at 50 Ohm load)
Power	One 3.7V Li-Ion battery, type 18650 When the analyzer is connected to a PC or a DC adapter with USB socket, it takes power from these sources Charge time: 3 hours when using a charger
Interface	High contrast E Ink display, 200 × 200 2x3 keys on the water-proof keypad Menus and help screens in English (standard), Japanese Bluetooth: v. 4.2 BLE Single-mode Class B USB type C connection to a personal computer
Dimensions	40 x 185 x 33 mm (1.6 x 7.3 x 1.3 inch)
Operating temperature	-15° ... 40 ° C (5 ... 104 ° F)
Weight	185 g (6.5 oz) with the battery

NOTE:

All specifications could be changed without notice.



RigExpert STICK PRO

Small. Handy. Powerful. UHF.

Factory calibrated analyzer is designed for checking and tuning UHF systems up to 600 MHz.

Carry it in your pocket or your belt, and work in the field or at height for up to 16 hours on a single charge.

Easily read data on the screen even in direct sunlight.



RigExpert STICK PRO

Frequency range	0.1 Δ 600 MHz
Frequency entry	1 kHz
Measurement for	12.5, 25, 28, 37, 50, 75, 100, 150, 200, 300, 450, 600 Ohm systems
SWR measurement range	1 to 100 in numerical modes, 1 to 10 in chart modes
R and X range	0... 10000, -10000... 10000
Display modes	Multé (a quick check of multiband antennas) SWR chart, 100 points SWR, Return loss, R, X, Z, L, C, magnitude and phase angle at one frequency
RF output	Connector type: N Output signal shape: square Output power: -10 dBm (at 50 Ohm load)
Power	One 3.7V Li-Ion battery, type 18650 When the analyzer is connected to a PC or a DC adapter with USB socket, it takes power from these sources Charge time: 3 hours when using a charger
Interface	200x200 color TFT display 2x3 keys on the water-proof keypad Menus and help screens in English (standard), Japanese Bluetooth: v. 4.2 BLE Single-mode Class B USB type C connection to a personal computer
Dimensions	40 x 185 x 33 mm (1.6 x 7.3 x 1.3 inch)
Operating temperature	0...40 °C (32...104 °F)
Weight	185 g (6.5 oz) with the battery

NOTE:

All specifications could be changed without notice.



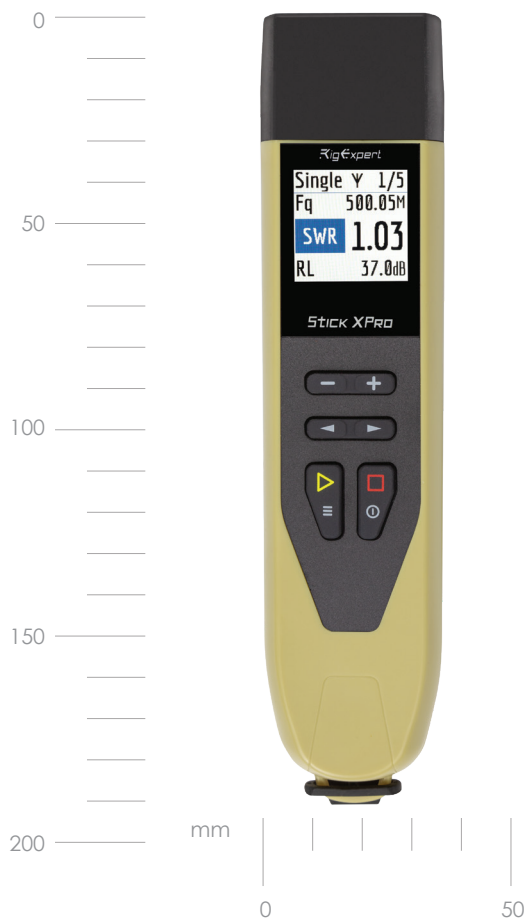
RigExpert STICK XPRO

Push your radio limits

Factory calibrated analyzer is designed for checking and tuning UHF systems up to 1000 MHz.

Carry it in your pocket or your belt, and work in the field or at height for up to 16 hours on a single charge.

Easily read data on the screen even in direct sunlight.



RigExpert STICK XPRO

Frequency range	0.1 Δo 1000 MHz
Frequency entry	1 kHz
Measurement for	12.5, 25, 28, 37, 50, 75,100,150,200,300,450,600 Ohm systems
SWR measurement range	1 to 100 in numerical modes, 1 to 10 in chart modes
R and X range	0... 10000, -10000... 10000
Display modes	SWR at single or multiple frequencies SWR, return loss, R, X, Z , L, Cat single frequency SWR chart, 20 to 500 points R, X chart, 20 to 500 points Smith chart, 20 to 500 points Return loss chart, 20 to 500 points TDR (Time Domain Reflectometer) chart Cable tools (loss and characteristic impedance) Optional open-short-load calibration. Mute mode - to check your multiband antenna promptly
RF output	Connector type: N Output signal shape: square Output power: -10 dBm (at 50 Ohm load)
Power	One 3.7V Li-Ion battery, type 18650 When the analyzer is connected to a PC or a DC adapter with USB socket, it takes power from these sources
Interface	220x220 TFT color display 2x3 keys on the water-proof keypad Menus and help screens in English (standard), Japanese Bluetooth: v. 4.2 BLE Single-mode Class B USB type C connection to a personal computer
Dimensions	40 x 185 x 33 mm (1.6 x 7.3 x 1.3 inch)
Operating temperature	-20°- 55°C (-4°-131°F)
Weight	185 g (6.5 oz) with the battery

NOTE:

All specifications could be changed without notice.



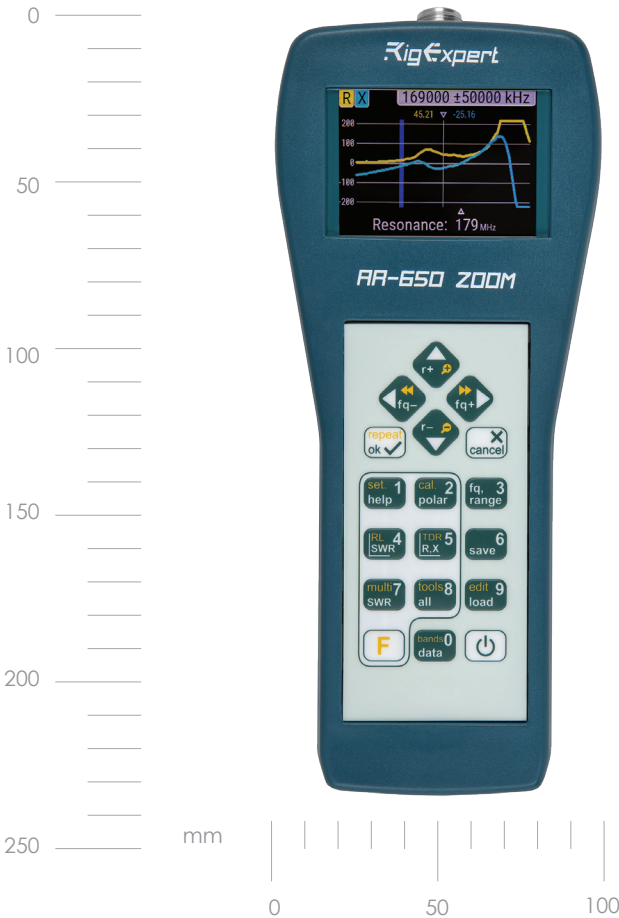
RigExpert AA-650 ZOOM

Wide range and PRO-level functionality

Factory calibrated analyzer is designed for checking and tuning UHF systems up to 650 MHz.

Expand measurement boundaries and functionality with PRO-level tool.

Explore every graph detail on a large screen with ZOOM function.



RigExpert AA-650 ZOOM

Frequency range	0.1 Δo 650 MHz
Frequency entry	1 kHz
Measurement for	12.5, 25, 28, 37, 50, 75, 100, 150, 200, 300, 450, 600 Ohm systems
SWR measurement range	1 to 100 in numerical modes, 1 to 10 in chart modes
R and X range	0...10 000, -10 000...10 000 in numerical modes, 0.. 1 000, -1 000... 1 000 in chart modes
Display modes	SWR at single or multiple frequencies SWR, return loss, R, X, Z , L, Cat single frequency SWR chart, 20 to 500 points R, X chart, 20 to 500 points Smith chart, 20 to 500 points Return loss chart, 20 to 500 points TDR (Time Domain Reflectometer) chart Cable tools (loss and characteristic impedance) Optional open-short-load calibration. Multe mode - to check your multiband antenna promptly
RF output	Connector type: N Output signal shape: square Output power: -10 dBm (at 50 Ohm load)
Power	Three 1.5V alkaline batteries, type AA, or Three 1.2V Ni-MH batteries, type AAMax. 3 hours of continuous measurement, max. 2 days in standby mode when fully charged batteries are used When the analyzer is connected to a PC or a DC adapter with a USB socket, it takes power from these sources
Interface	320x240 TFT color display 6x3 keys on the water-proof keypad Menus and help screens in English (standard), Japanese, Ukrainian, Polish, Spanish and German Bluetooth: v. 4.2 BLE Single-mode Class B USB type C connection to a personal computer
Dimensions	230 x 100 x 55 mm (9 x 4 x 2 inch)
Operating temperature	0...40 °C (32...104 °F)
Weight	450 g (15.9 oz)

NOTE:

All specifications could be changed without notice.



RigExpert AA-1500 ZOOM

An updated and even more powerful

Factory calibrated analyzer is designed for checking and tuning UHF systems up to 1500 MHz.

Expand measurement boundaries and functionality with PRO-level tool.

Explore every graph detail on a large screen with ZOOM function even in direct sunlight.



RigExpert AA-1500 ZOOM

Frequency range	0.1 Δ 1500 MHz
Frequency entry	1 kHz
Measurement for	12.5, 25, 28, 37, 50, 75, 100, 150, 200, 300, 450, 600 Ohm systems
SWR measurement range	1 to 100 in numerical modes, 1 to 10 in chart modes
R and X range	0...10 000, -10 000...10 000 in numerical modes, 0.. 1 000, -1 000... 1 000 in chart modes
Display modes	SWR at single or multiple frequencies SWR, return loss, R, X, Z , L, Cat single frequency SWR chart, 20 to 500 points R, X chart, 20 to 500 points Smith chart, 20 to 500 points Return loss chart, 20 to 500 points TDR (Time Domain Reflectometer) chart Cable tools (loss and characteristic impedance) Optional open-short-load calibration. Multe mode - to check your multiband antenna promptly
RF output	Connector type: N Output signal shape: square Output power: -10 dBm (at 50 Ohm load)
Power	Three 1.5V alkaline batteries, type AA Three 1.2V Ni-MH batteries, type AA Three 3.7V LiPo batteries, 14500 Max. 4 hours of continuous measurement, max. 2 days in standby mode when fully charged batteries are used. When the analyzer is connected to a PC or a DC adapter with a USB socket, it takes power from these sources
Interface	USB connection to personal computer 800×480 color Blanview® display 6×3 keys on the water-proof keypad Menus and help screens in English (standard), French, Italian, Japanese, Ukrainian, Portuguese, Spanish and German Bluetooth v. 4.2 (Single-mode, Class B)
Dimensions	100 × 230 × 55 mm, (4 × 9 × 2 inch)
Operating temperature	0...40 °C (32...104 °F)
Weight	442g (15.6 oz)

NOTE:

All specifications could be changed without notice.



RigExpert AA-2000 ZOOM

TURN complex analysis into FUN!

Factory calibrated analyzer is designed for checking and tuning UHF systems up to 2000 MHz.

Expand measurement boundaries and functionality with PRO-level tool.

Explore every graph detail on a large screen with ZOOM function even in direct sunlight.





RigExpert AA-2000 ZOOM

Frequency range	0.1 Δo 2000 MHz
Frequency entry	1 kHz
Measurement for	12.5, 25, 28, 37, 50, 75,100,150,200,300,450,600 Ohm systems
SWR measurement range	1 to 100 in numerical modes, 1 to 10 in chart modes
R and X range	0...10 000, -10 000...10 000 in numerical modes, 0.. 1 000, -1 000... 1 000 in chart modes
Display modes	SWR at single or multiple frequencies SWR, return loss, R, X, Z , L, Cat single frequency SWR chart, 20 to 500 points R, X chart, 20 to 500 points Smith chart, 20 to 500 points Return loss chart, 20 to 500 points TDR (Time Domain Reflectometer) chart Cable tools (loss and characteristic impedance) Optional open-short-load calibration. Multe mode - to check your multiband antenna promptly
RF output	Connector type: N Output signal shape: square Output power: -10 dBm (at 50 Ohm load)
Power	Three 1.5V alkaline batteries, type AA Three 1.2V Ni-MH batteries, type AA Three 3.7V LiPo batteries, 14500 Max. 4 hours of continuous measurement, max.2 days in standby mode when fully charged batteries are used When the analyzer is connected to a PC or a DC adapter with a USB socket, it takes power from these sources
Interface	USB connection to personal computer 800×480 color Blanview® display 6x3 keys on the water-proof keypad Menus and help screens in English (standard), French, Italian, Japanese, Ukrainian, Portuguese, Spanish and German Bluetooth v. 4.2 (Single-mode, Class B)
Dimensions	100 × 230 × 55 mm, (4 × 9 × 2 inch)
Operating temperature	0...40 °C (32...104 °F)
Weight	450 g (15.9 oz)

NOTE:

All specifications could be changed without notice.



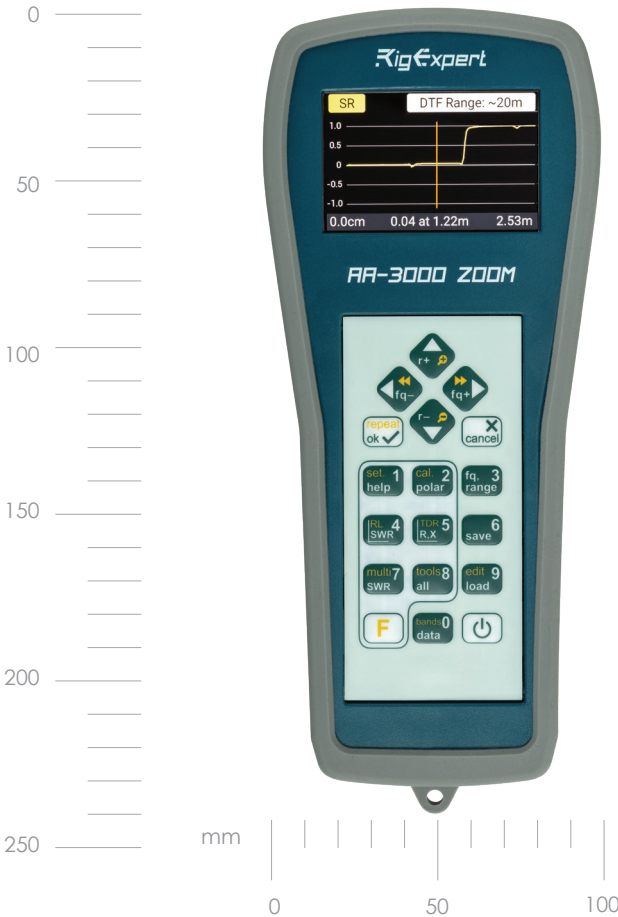
RigExpert AA-3000 ZOOM

Go beyond the Earth

Factory calibrated analyzer is designed for checking and tuning UHF systems up to 3 GHz!

Expand measurement boundaries and functionality with PRO-level tool.

Explore every graph detail on a large screen with ZOOM function even in direct sunlight.



RigExpert AA-3000 ZOOM

Frequency range	0.1 Δo 3000 MHz
Frequency entry	1 kHz
Measurement for	12.5, 25, 28, 37, 50, 75,100,150,200,300,450,600 Ohm systems
SWR measurement range	1 to 100 in numerical modes, 1 to 10 in chart modes
R and X range	0...10 000, -10 000...10 000 in numerical modes, 0.. 1 000, -1 000... 1 000 in chart modes
Display modes	SWR at single or multiple frequencies SWR, return loss, R, X, Z , L, Cat single frequency Smith chart, 20 to 500 points R, X chart, 20 to 500 points Smith chart, 20 to 500 points Return loss chart, 20 to 500 points TDR (Time Domain Reflectometer) chart Cable tools (loss and characteristic impedance) Optional open-short-load calibration. Multe mode - to check your multiband antenna promptly
RF output	Connector: N-type Output signal shape: square Output power: -10 dBm (at 50 Ohm load)
Power	Three 1.5V alkaline batteries, type AA Three 1.2V Ni-MH batteries, type AA Three 3.7V LiPo batteries, 14500 Max. 4 hours of continuous measurement, max. 2 days in standby mode when fully charged batteries are used. When the analyzer is connected to a PC or a DC adapter with a USB socket, it takes power from these sources
Interface	USB connection to personal computer 400x800 color BlanView display 6x3 keys on the water-proof keypad Menus and help screens in English (standard), French, Italian, Japanese, Ukrainian, Portuguese, Spanish and German Bluetooth v. 4.2 (Single-mode, Class B)
Dimensions	100 × 230 × 55 mm, (4 × 9 × 2 inch)
Operating temperature	0...40 °C (32...104 °F)
Weight	650g (23 oz) with battery

NOTE:

All specifications could be changed without notice.



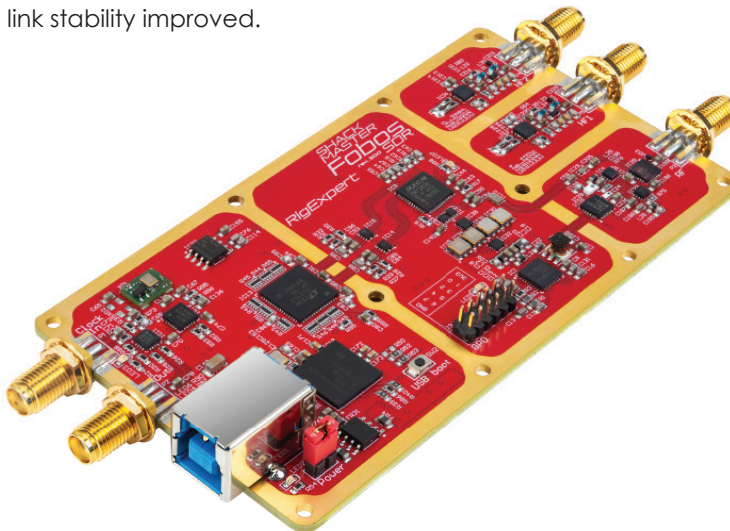
Fobos SDR

Broad main frequency range	continuous 50 MHz to 6 GHz coverage
Two auxiliary coherent direct sampling channels	100 kHz to 25 MHz coverage, suitable for diversity reception, correlation and phase-difference direction finding
Overall frequency coverage	100 kHz to 6 GHz
50 MHz sampling bandwidth	50 M samples per second IQ rate or 2×25 M samples per second direct sampling rate
High-quality signal conversion	double heterodyne, 14-bit sample depth analog to digital conversion (ADC).
Continuous data stream	digitized data with no dropped buffers, uninterrupted recording and real-time analysis
All the features simultaneously, no “either-or”	50 MHz rate, and 14-bit ADC and continuous data stream within continuous frequency coverage

NOTE:

Fobos SDR has a 14 GHz per second best in class Band Scan feature

- 8 lines GPO port (general purpose output – software-controlled digital outputs) added to control an external equipments.
- The low-pass filters for HF1 and HF2 inputs designed with cutoff frequency of 24 MHz.
- USB data link stability improved.



Fobos SDR

Frequency range	100 kHz - 30 MHz (direct sampling) 30 MHz - 6 GHz (double heterodyne)
IQ sample rate (bandwidth)	Up to 50 MHz
ADC resolution	14 bit
Frequency stability	± 0.5 ppm
PCB dimensions	110 mm x 60 mm
Outline dimensions	130 mm x 60 mm x 16 mm



ShackMaster power 600

High-Quality DC power supply designed to ensure stable and adjustable 13.8V voltage

- Adjustable output voltage, 12-15V, MAX 40A
- Deadly Quiet
- Highly Efficient
- Lightweight and Compact
- DXpeditions Compatible
- Tolerant to gasoline generators
- Saves workspace due to flexible orientation
- 4 USB ports with Quick Charge 2.0
- Easy touchscreen operation. Free ShackPower SW for PC lets you configure Power 600 and view parameters graphically.



Applications

- Mechanical & electrical equipment sourcing
- Low noise low power amplifiers
- Power sourcing for PoE systems
- Amateur radio
- Lab equipment
- Telecom
- DIY



Slick Flexibility

The flexible orientation and multiple connectivity options make it easy to use.



Silent Quiet Operation

The low EMI and acoustic noise minimize distractions.



Supply

Supply Potent Power Delivery: Revel in an amped-up 600W power output. Nonstop rapid charging: 4 USB ports with Quick Charge QS2.0 Safety. The Intelligent Protection System protects your devices from damage. Custom voltage setting: Adjustable Output Voltage allows easy modification of the power supply to match the characteristics of different devices.

Rated power	600W
Rated current	40A
Output voltage	13.8V (12-15V Software adjustable)
Input AC voltage	80V to 264V
Input AC frequency	47Hz to 63Hz
Operating temperature range	-20°C to +70°C -4°F to 158°F
Acoustic noise	~21 dBa
Overvoltage protection	Yes
Overtemperature protection	Yes
Overcurrent protection	Yes
Short circuit protection	Yes

AC current (maximum)	6.4A @ 115VAC 3.2A @ 230VAC
EMC	EN IEC 61000-6-3:2021 EN IEC 61000-6-1:2019
Ripple (maximum)	200mVp-p
Storage temperature range	-40°C to +85°C -40°F to 185°F
Inrush current (maximum)	40A @ 115VAC; 80A @ 230VAC
USB Charging Ports	5V/2.5A, 9V/2.5A, 12V/2.5A
Dimensions	172mm x 55mm x 185mm 6.8" x 2" x
Weight	1.1kg 2 lb 7oz

Note:
All specifications could be changed without notice.

ShackMaster OSL kit

OSL (Open-Short-Load)
Calibration Set



Tune in for easy calibration!

The kit is designed to calibrate your equipment in the DC to 2.5 GHz frequency range. Carry it in your pocket, work in the field and control it freely thanks to the swivel design.

Number of connectors	3
Connector type	N male 50 Ohm
Frequency range	DC(direct current) to 2,5 GHz
Power	250 mVt
Return Loss	-22 dB @ 3 GHz -31 dB @ DC to 1,5GHz
Resistance DC	50 Ohm
Operating temperature range	-15°C to +55°C
Storage temperature range	-40°C to +85°C
Weight	110 g
Dimensions	49 x 84.6 x 25 mm

NOTE:

All specifications could be changed without notice.



REAMP

The REAMP is the best choice for your Ultra Low Power projects and IoT developments. REAMP measures ultra-low current and voltage and functions as a highly stable and accurate power source for Device Under the Test.

Comprehensive power consumption analysis with REAMP PC Software (diagrams, data recording, saving data log files)

- Easy navigation both for small or extremely large measurement data sets, zooming and scrolling features
- Consumption averaging as well as real-time analysis
- Battery Life Calculator
- Ready-to-use Multi-OS software for Windows®, Linux® and macOS®



NOTE:

All specifications could be changed without notice.



Number of measuring channels	3
Measuring range	Current - from 10 μ A to 1A (1 channel) Voltage - from 0V to 5V (2 channels)
Sample rate	10 Hz...10 kHz (10 kHz one channel only)
Measuring results displaying	Instant values graph Average values in digits format Saving data to a log Easy navigation using horizontal and vertical zooming
Power supply	USB port of PC Additional built-in Li-ion battery for using when current consumption is over 500 mA
Interface	USB connection to PC (USB 2.0, USB 3.0) Operation system Windows 7, Windows 8, Windows 10, macOS, Linux (Ubuntu) Support for 3 languages (EN, UA, RU) Application software «RigExpert AMP Logger»
Dimensions	67 x 57 x 27 mm

NOTE:

All specifications could be changed without notice.



RigExpert MRB-M4



MRB-M4
Посилена Li-Ion батарея
7.4В | 37В·г | 4920мА·г
Quick Charge QC 2.0
IP-65 type-C порт зарядки

НЕ РОЗБИРАТИ
УВАГА: ПРОЧИТАЙТЕ
ІНСТРУКЦІЮ ПЕРЕД
ВИКОРИСТАННЯМ.
Для індикації стану батареї
натисніть екран:
● зарядка триває
● 80%-100% заряду батареї
● 30%-80% заряду батареї
● менше 30% заряду
Немає: повністю розряджена
Сумісна з Motorola DP4400, DP4600,
DP4800, DP4401, DP4601, DP4801,
DP4000e, DP2000e

Зроблено в Україні
RigExpert www.rigexpert.com





RigExpert MRB-M4

The Li-Ion battery for Motorola DPxx mobile radio with fast charging QC2.0 USB Type-C is designed for extreme environment usage.

- Stay connected: up to 38 hours on one charge
- Charge fast: 90% capacity in 90 minutes
- Battery status RGB LED indication (activated by pressing the Status Check Button)
- Don't lose control: charge the radio without turning it off
- Be autonomous: charge even from a powerbank on the go

Rated capacity	4920mAh, 37BWh
Nominal output voltage	7.4V
Battery type	Li-ion LG INR21700M50LT
Charging protocol	BCP1.2, QC2.0
Charging port	USB Type-C (IP 65)
Nominal charging current	2A
Maximum charging current	3.0A
Nominal discharging current	1.5A
Discharge current protection	9.25A
Operation temperature	-20°C to +60°C
Charge temperature range	0°C to +45°C
Battery protection level	IP 65
Expected Life Cycle	After 1000 cycles, more than 80% capacity is retained (under the condition of operation at t=+25°C and nominal charge/discharge currents)
Compatibility	Motorola DP4400, DP4600, DP4800, DP4401, DP4601, DP4801, DP4000e Series, DP2000e Series
Dimensions	113,6 x 55,2 x 33,9 mm
Weight	206g

NOTE:

All specifications could be changed without notice.



RigExpert MRB-MR7





RigExpert MRB-MR7

The Li-Ion battery for Motorola R7 handy-talkie with fast charging QC2.0 USB Type-C is designed for reliable communication in extreme environment.

- Stay connected: the radio is on during the charge
- Type-C connector on the top panel allows you to charge the battery when the radio is on
- Battery status RGB LED indication (activated by pressing the Status Check Button)
- Fully compatible with Motorola chargers
- Quick Charge: 90% capacity in 90 minutes

Rated capacity	4920mAh, 37Wh
Nominal output voltage	7.4V
Battery type	Samsung INR21700-50S
Charging protocol	BCP1.2, QC2.0
Charging port	USB Type-C (IP 65)
Nominal charging current	2A
Maximum charging current	3.0A
Nominal discharging current	1.5A
Discharge current protection	9.25A
Operation temperature	-20°C to +60°C
Charge temperature range	0°C to +45°C
Battery protection level	IP 65
Expected Life Cycle	After 1000 cycles, more than 80% capacity is retained (under the condition of operation at t=+25°C and nominal charge/ discharge currents)
Compatibility	Motorola R7 series
Dimensions	118,5 x 54,7 x 34 mm
Weight	204g

NOTE:

All specifications could be changed without notice.



RigExpert 2.1GPA-LD

2.1 Amplifiers GHz Bi-directional Rx/T amplifier

Small but powerful

Range 2110-2200 GHz. Designed specifically for use in devices with 5V operating power.

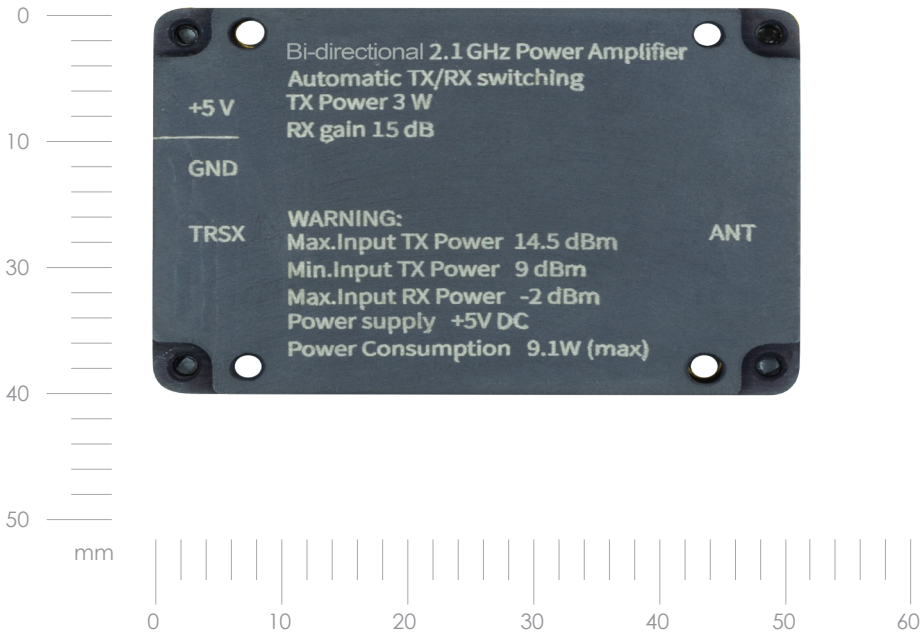
Reception gain 15 dB.

Transmission gain 20 dB.

Output power 3 W.

Automatic switching (VOX) of reception and transmission modes with adjustable VOX sensitivity level.

Application areas: amplification of UAV control signals, SDR radio, amateur radio, IoT, laboratory equipment.



Dimensions and weight

Dimensions, mm	40x56x15
Weight, g	46

Important note:
Maximum TX input power can be changed by replacing the input attenuator.

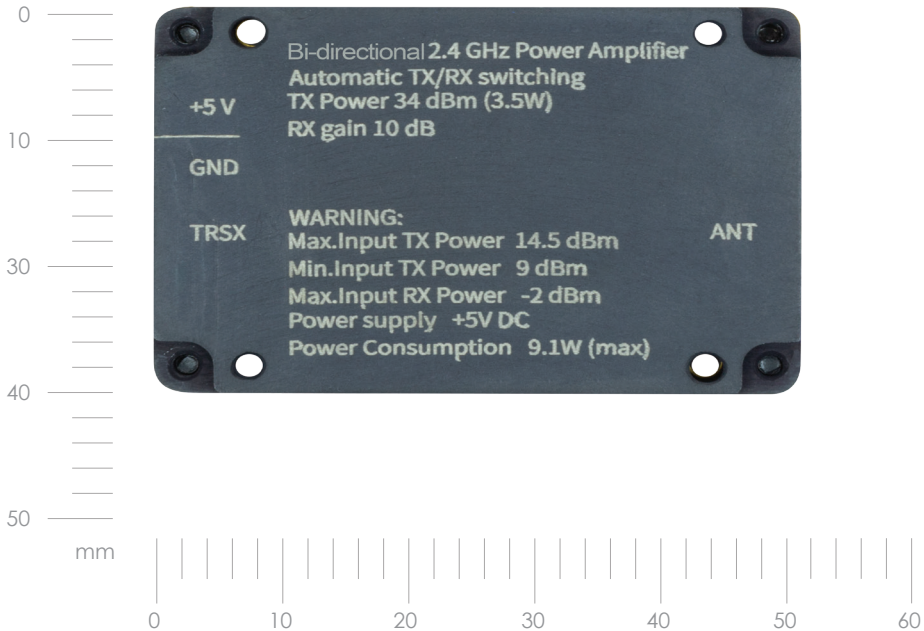
RigExpert 2.4GPA

2.4GHz Bi-directional amplifier

Small but powerful

Intended for signal amplification when used for UAVs, ham radio, IoT, and measurements.

Guaranteed conformance to stated specs.



Dimensions and weight

Dimensions, mm	40x56x15
Weight, g	46

Important note:
Maximum TX input power can be changed by replacing the input attenuator.



RigExpert 2.4GPA

Absolute Maximum Ratings

Parameter	Rating
Min RF Input TX Power	9 dBm
Max RF Input TX Power	14.5 dBm
Max RF Input RX Power	-2 dBm
Device Voltage	5.5 V

Recommended Operating Conditions

Parameter	Min.	Typical	Max.	Units
RF Input TX Power	9	13	14.5	dBm
Device Voltage	+4.75	+5	+5.25	V

Electrical Specifications

Parameter	Умови	Min.	Typical	Max.	Units
Frequency Range		2000		2600	MHz
TX Gain			22		dB
RX Gain			10		dB
Output Power CW	Input RF Power 13dBm @ 2.4 GHz	33.5	34.5	35	dBm
Output Power Pulse	Input RF Power 13dBm @ 2.4 GHz	34	35	36	dBm
2nd Harmonic CW	Output Power 34.4dBm @ 2.4 GHz		0		dBm
2nd Harmonic Pulse	Output Power 35dBm @ 2.4 GHz		2		dBm
Power Consumption in CW	Input RF Power 13dBm @ 2.4 GHz		9.1		W
Power Consumption in RX			0.3		W

NOTE:

All specifications could be changed without notice.

RigExpert 770 MPA-LD

Bidirectional amplifier 770 MHz

Designed specifically for use in devices with 5 V operating power supply.

Designed to amplify UAV control signals,

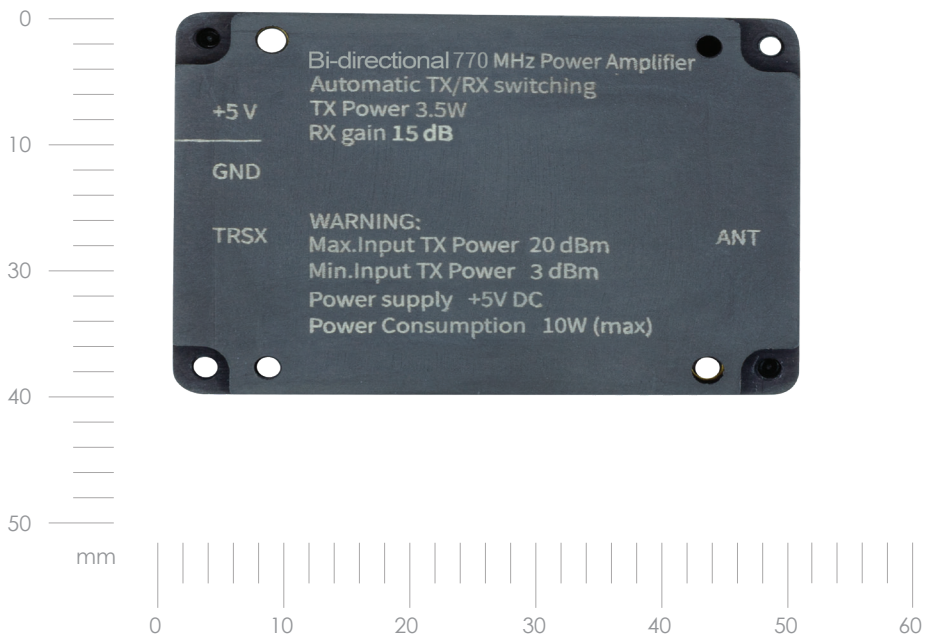
SDR radio, amateur radio, IoT and laboratory equipment.

Receive gain 15 dB.

Transmit gain 20 dB.

Automatic switching (VOX) of receive and transmit modes.

- ESD/EMI shield
- Passive cooling
- Convenient MMCX connectors



Dimensions and weight

Dimensions, mm	40x56x15
Weight, g	46

Important note:

Maximum TX input power can be changed by replacing the input attenuator.



RigExpert 770 MPA-LD

Absolute Maximum Ratings

Parameter	Rating
Min RF Input TX Power	3 dBm
Device Voltage	5.25 V

Recommended Operating Conditions

Parameter	Min.	Typical	Max.	Units
RF Input TX Power	3		20	dBm
Device Voltage	+4.75	+5	+5.25	V

Electrical Specifications

Parameter	Умови	Min.	Typical	Max.	Units
Frequency Range		740		810	MHz
TX Gain 740-810 MHz		18	20	22	dB
RX Gain		13	15	15,96	dB
Output Power CW	Input RF Power 20dBm @ 750 MHz		2.82		W
Output Power Pulse	Input RF Power 20dBm @ 750 MHz		3.53		W
Power Consumption in RX			0.4		W
Power Consumption in TX			10		W

Attention: Laboratory tests were conducted with a 5.00 V power supply and a temperature of +22°C.

NOTE:

All specifications could be changed without notice.

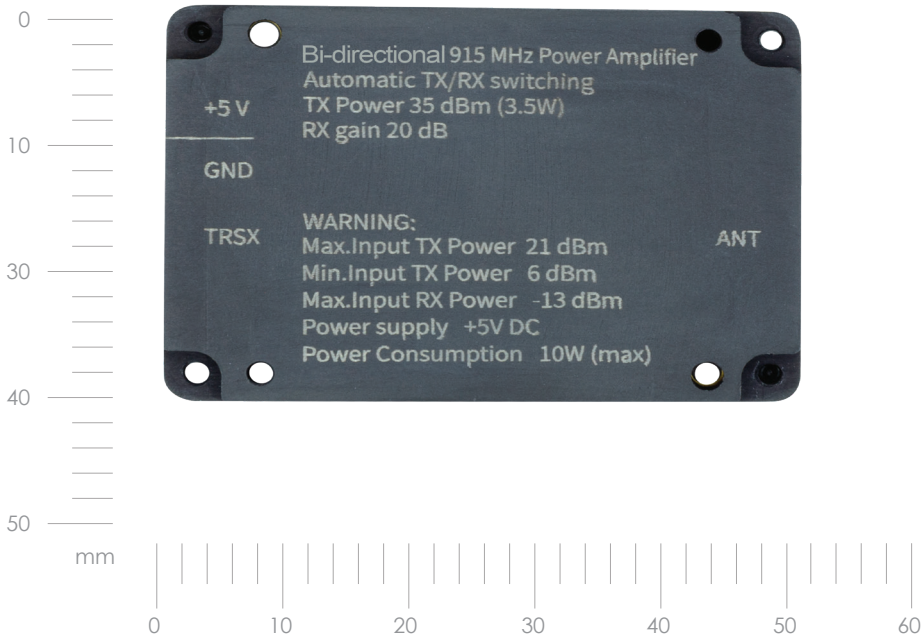
RigExpert 915MPA

915MHz Bi-directional amplifier.

Guaranteed conformance to stated specs

Intended for signal amplification when used for UAVs, ham radio, IoT, and measurements.

RX gain 20 dB . TX gain 15 dB.



Dimensions and weight

Dimensions, mm 40x56x15

Weight, g 46

Important note:
Maximum TX input power can be
changed by replacing the input attenuator.



RigExpert 915MPA

Absolute Maximum Ratings

Parameter	Rating
Min RF Input TX Power	6 dBm
Max RF Input TX Power	21 dBm
Max RF Input RX Power	-13 dBm
Device Voltage	5.5 V

Recommended Operating Conditions

Parameter	Min.	Typical	Max.	Units
RF Input TX Power	6	20	21	dBm
Device Voltage	+4.75	+5	+5.25	V

Electrical Specifications

Parameter	Conditions	Min.	Typical	Max.	Units
Frequency Range		902		928	MHz
TX gain			15		dB
RX gain			20	22	dB
Output Power CW	Input RF Power 20dBm @ 916 MHz	34	35	36	dBm
Output Power Pulse	Input RF Power 20dBm @ 916 MHz	35	35.5	36	dBm
2nd Harmonic CW	Output Power 35.1dBm @ 915 MHz		1.3		dBm
2nd Harmonic Pulse	Output Power 36.6dBm @ 915 MHz		1.9		dBm
Power Consumption in RX	Output RF Power 35dBm @ 916 MHz		9.8		W

NOTE:

All specifications could be changed without notice.

RigExpert 5.8G Minigun

5.8G Minigun Antena

Level up your drone control

Provides stable connection over longer distances due to directional characteristics and additional signal amplification.

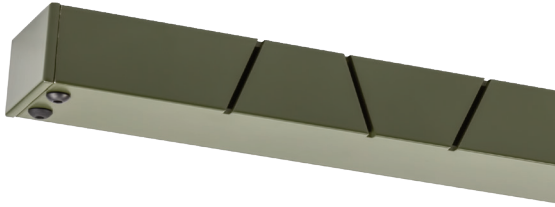
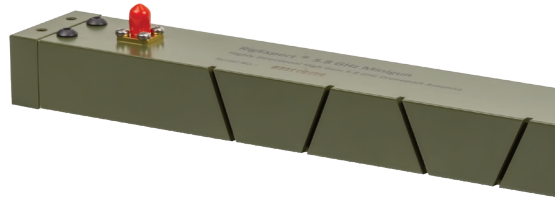
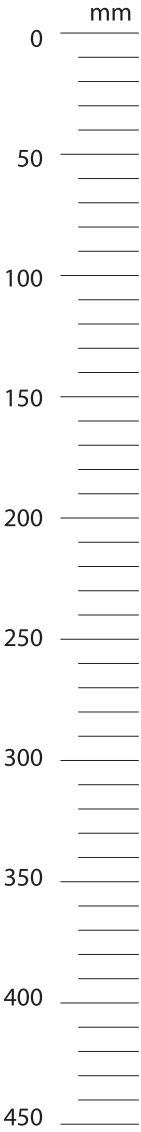
Antenna type	Slot Antenna Array
Frequency range	5725 MHz до 5875 MHz
Connector type	SMA (female)
Impedance	50 Ohm
Maximum power	250 W
Gain	15 dBi
SWR	< 1.5
Polarization	Linear (Vertical)
Radiation pattern	H-Plane 90°, V-Plane 8°
Mounting	1/4" screw
Dimensions	40 mm x 25 mm x 450 mm
Weight	400g (14 Oz)

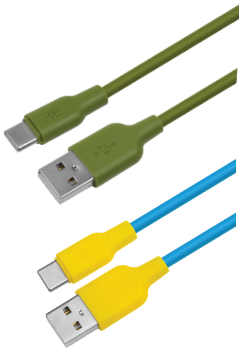
NOTE:

All specifications could be changed without notice.



RigExpert 5.8G Minigun





Silicon USB Type A - Type C cable

Frost-resistant and highly flexible

This cable is designed for fast charging of devices with Type C.

Maintains its integrity and functionality even under extreme bending and prolonged temperature up to -15°.

Available colors: Military green and Blue



Silicon case

Protect your analyzer

The silicone cover is intended for additional protection of AA-650 ZOOM, AA-1500 ZOOM, AA-2000 ZOOM analyzers from dust, moisture and adverse weather conditions.

Comes complete with AA-3000 ZOOM.

Note: Please note that the case does not cover the front panel of the analyzer.



Lanyard for the Stick analyzer

Free your hands for radio communication

The lanyard is intended for carrying the analyzer around the neck.

Suitable for mounting any antenna analyzer from the Stick line.



Holster for the Stick analyzer

Cover YOUR Stick!

The holster is designed to carry and protect the Stick analyzer.

Use it for field work and free your hands for more productivity.

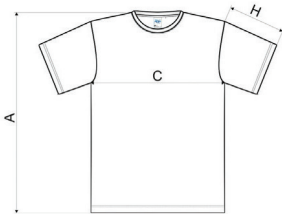
RigExpert T-Shirt "I'm fine"

Brighten up your wardrobe with this black t-shirt, showcasing a clever SWR meter graphic that playfully declares "I'm fine." This tech-inspired design adds a touch of humor to keep spirits high, even during tough times.

Perfect for tech enthusiasts and anyone who appreciates a good laugh with their fashion.

Graphic dimensions: 26 x 23.5 cm.

Available in sizes from S to XXL.



Size chart, cm.

Size	S	M	L	XL	2XL
A	70	72	74	76	78
C	47	51	55	59	64
X	19.5	20.5	21.5	22.5	23.5



- Reliability is embedded in the DNA of RigExpert devices.
- Every RigExpert device goes through four phases of quality control before entering the sales representative warehouse.
- Therefore, we are confident in the quality of our products and offer a two-year replacement of the device instead of repair.
- We don't take any risks and you only win.

RigExpert Club

Join RigExpert Club to get significant benefits:

- Additional 1 year replacement warranty from RigExpertCare
- Special promotions and offers
- Chance to win a gift certificate



To participate in the new support program, you need to purchase one of our **ShackMaster Power 600** or **MATCH** devices and use the RigExpert Club card found inside the box:

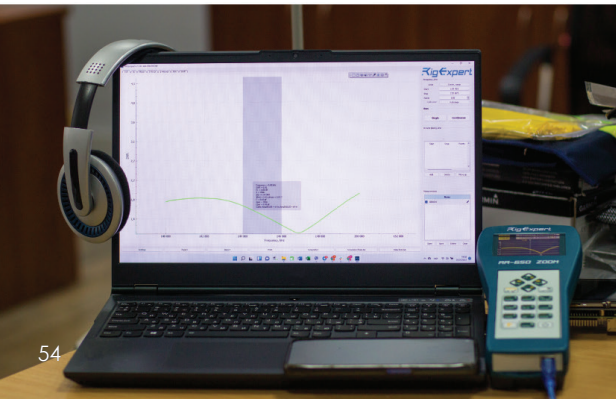
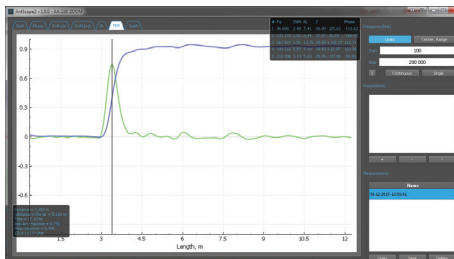
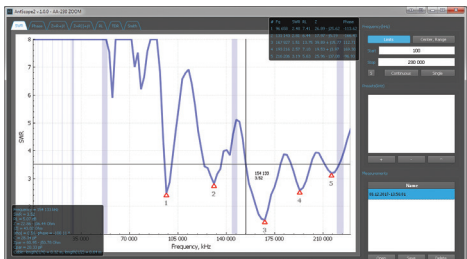
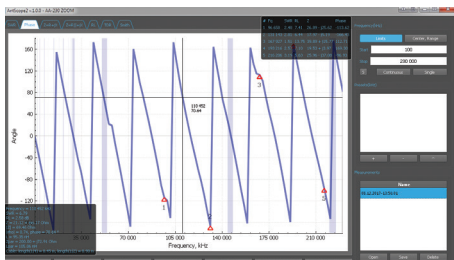
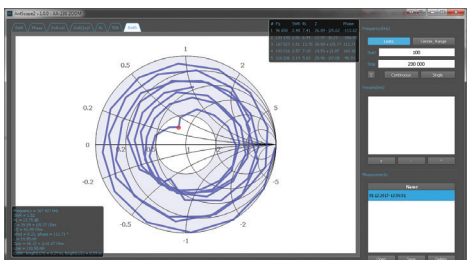
Scan OR-code on the Club card with a smartphone/tablet » You can see a Registration form » Fill it down » You will get a notification: **«Congratulatory You have Joined the RigExpert Club»**

Link for registration <https://rigexpert.com/login/>



AntScope2 and mobile versions of AntScope

The free AntScope software is designed to support various models of RigExpert antenna analyzers on your computer (Windows, Linux, MAC OS) and on smartphones, tablets, Apple.





MixW4

Three-in-one radio amateur software: Logger, Digital, Contests

Multi-mode multi-platform software for radio amateurs. Numerous new features including FT8, FT4, KiwiSDR modes, and external RX support.

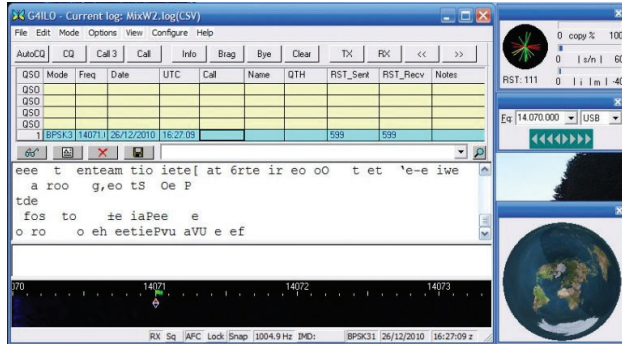
Important features of MixW4:

- Three-in-one (Logger, Digital, Contests)
- KiwiSDR support
- Digital mods including FT8 and FT4 with proprietary digital signal processing algorithms
- Unique CW software algorithm with fine-tuning for solid (FB) signal
- User manual in English, Dutch, and German languages
- Convenient interface with the ability to multi-window, customize fonts, and display
- A wide range of macros allowing for faster communication
- Contest mode with support for modules with extended statistics - you can write contest modules yourself
- User-Defined Contest - take part in any contest
- Simple scripting programming language to write additional modules and statistics by yourself
- Technical support by e-mail (response time no more than 24 hours considering WorldWide service)



MixW3

The Legendary Software for radio amateurs
Three in One: Logger, Digital, Contests
You can download and purchase it from
<http://mixw.net/>





Software for REAMP

Full Measure with Ease

With free software, you gain extensive capabilities for recording and analyzing the data measured by the REAMP device. Additionally, you can conveniently configure the device for optimal performance.

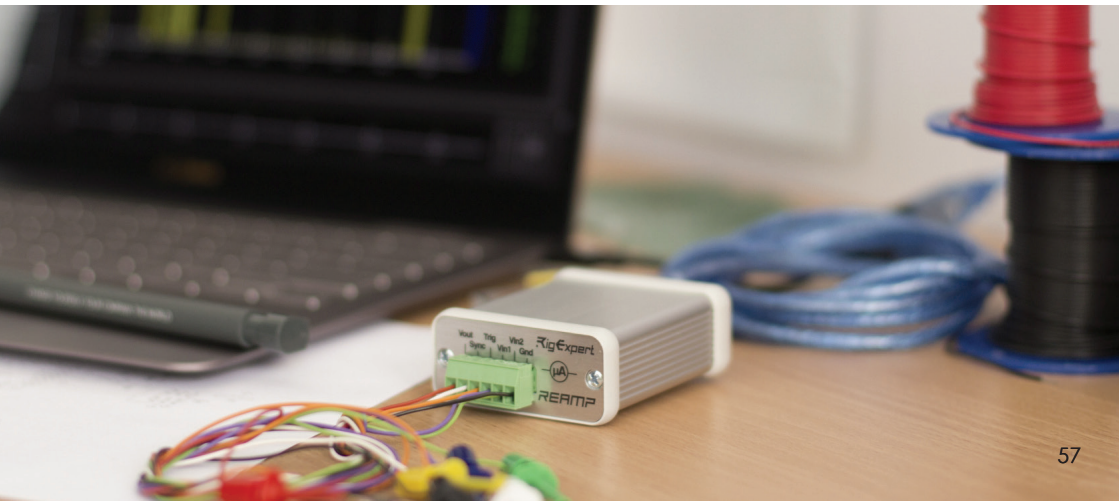
Download the software to your laptop or desktop computer and choose your preferred data collection method and mode. Move and scale data on the screen for the most convenient display.

Software for ShackMaster Power 600

Full Control & Stabilization

The free ShackPower software is designed for quick setup of operating modes for the ShackMaster Power 600 power supply unit, providing complete control over the current and voltage consumption of connected devices.

Download the software to your laptop or computer and select the operating mode for your power supply. Access real-time graphs of current consumption, voltage, and temperature parameters. Maximize the lifespan of your devices and stabilize your system.





Fobos SDR

API Library

The interaction between the Fobos SDR receiver and other application software is based on the open-source, cross-platform, compact, and easy-to-use **libfobos** API library.

Usage Examples

Examples of using the **libfobos** library in application software are available with full source codes for programming languages **C, C++, C#, and Delphi/Pascal**.

Third-Party Software Support

The most popular programs and libraries are already supported and can work with the Fobos SDR receiver through dedicated plugins, including: **SDRSharp, GnuRadio, HSDR ExtIO, SDRPlusPlus, uSDR, SoapySDR**.

All plugin source codes are available on our **GitHub** page and can be used to quickly get started with the **Fobos SDR** receiver and its **libfobos** library.

Key Software Features:

- **Device detection & selection** – Lists connected devices and allows selection from the list.
- **Device & library information** – Displays detailed information about the receiver and API.
- **Comprehensive settings** – Configure all parameters, including frequency, sample rate, and gain.
- **Input & mode selection** – Choose input sources and operational modes.
- **Signal digitization & data transmission** – Convert analog signals and send data to a computer.
- **Clock source selection** – Configure the clock signal source.
- **Ultra fast band scan** – 14 GHz per second
- **GPO line control** – Manage General Purpose Output (GPO) lines.

All **plugin source codes** are available on our **GitHub page**, enabling fast and efficient integration of the **Fobos SDR** receiver with the **libfobos** API library.



Follow our GitHub repos and get inspiration for your work
<https://github.com/rigexpert>



Visit our server and download portable software distributions with built in Fobos SDR support <https://rigexpert.com/files/software/FobosSDR/>

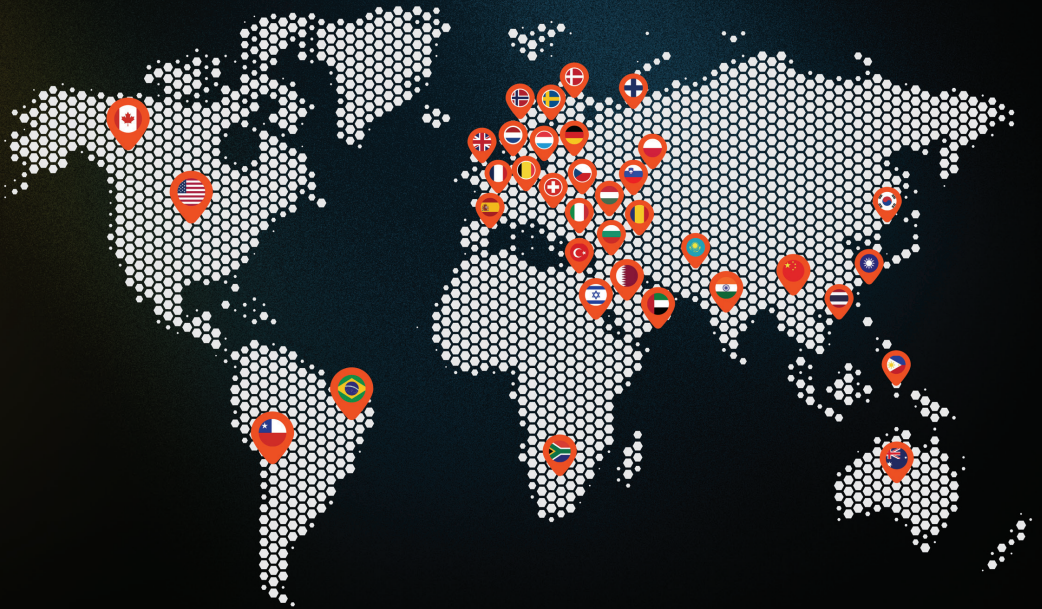


Download and evaluate the μ SDR software with Fobos SDR API native support. <https://sourceforge.net/projects/u-sdr/>



RigExpert Worldwide

Our trusted partners and distributors across the globe.



VISIT OUR
WHERE TO BUY
webpage





Rig Expert Ukraine Ltd.

Solomyanska Square, 2, office 918, Kyiv, 03035

Ukraine, tel: +380 44 353 92 42

e-mail: office@rigexpert.com

web: www.rigexpert.com

facebook: [@RigExpertUkraineLtd](https://www.facebook.com/RigExpertUkraineLtd)

instagram: [@rig_expert_ukraine_ltd](https://www.instagram.com/rig_expert_ukraine_ltd)

X: [@rigexpert](https://twitter.com/rigexpert)

Made in Ukraine

