

RigExpert TI-8

Quick Start Guide

Downloading and installing the TI Manager software

Please download the latest version of software and documentation from our website:

rigexpert.com/ti-8 (Software downloads section, **SetupRET18.exe** file). Start the **SetupRET18.exe** and follow on-screen instructions.

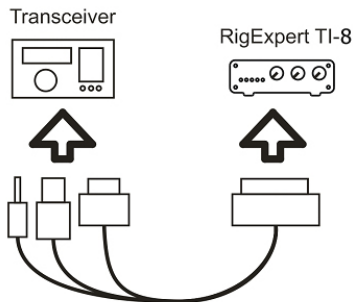
Once the setup program is finished, the TI Manager software is automatically started. This program is necessary for the RigExpert TI-8 to function. Please watch the RigExpert TI Manager icon in the system tray of your Windows desktop.



Connect your RigExpert TI-8 to your transceiver

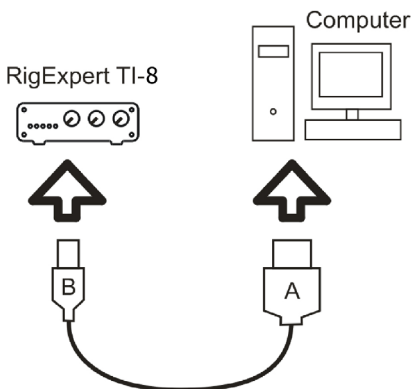
This connection is made by using a specialized cable. A specific type of the cable depends on the manufacturer and the model of your transceiver.

Please watch the marking to make sure all plugs are inserted properly to corresponding sockets located on your transceiver.



Connect your RigExpert TI-8 to your computer

Use a standard USB A-B cable (up to 5 meters long) to connect your RigExpert TI-8 to a USB port of your computer. It is recommended to use USB sockets located at the back panel of the PC.

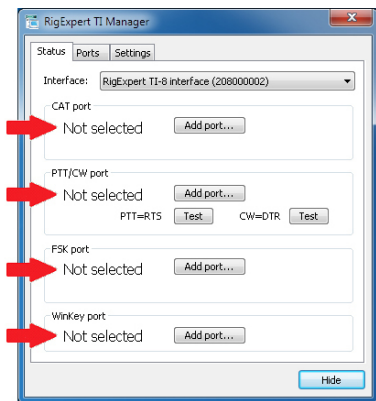


Once the cable is connected, computer detects a new device. The user does not have to interact at this step.

Set up the TI Manager software

The TI Manager program lets you configure virtual serial ports. These ports are needed for other software to communicate to your transceiver.

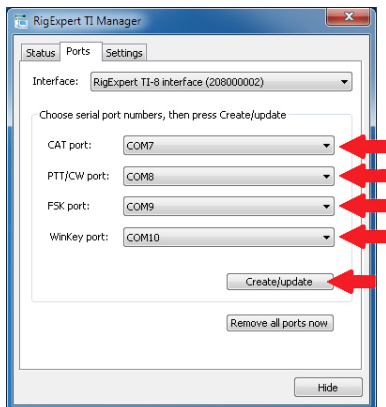
Initially, no ports are created, so you will see **Not selected** instead of port numbers.



Set up the TI Manager software – continued

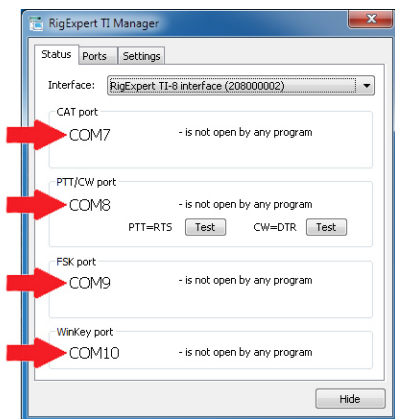
Press **Add port** and select serial port numbers for CAT, PTT/CW, FSK and WINKEY ports. For instance, assign port numbers COM7, COM8, COM9 and COM10 for these functions.

Do not forget to press the **Create/update** button.



A few seconds later the virtual serial ports will be created and you will see port numbers at the **Status** tab.

You may press the **Hide** button to put the program in the system tray.



Set up programs for operating phone, CW and digital modes

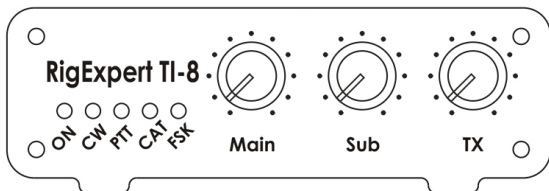
RigExpert TI-8 is designed to work with various programs, such as MixW, MMTTY, MMSSTV, MMVARI, HRD, WinTest and many others. In general, the following hardware-related settings should be done in the software:

- Choose an audio device for audio input and output, should be “Line in (**USB Audio CODEC**)” and “Speakers (**USB Audio CODEC**)”. Please notice that the exact names of audio devices depend on the version and the language of your operating system.
- Select a serial port number for the CAT system. In this example, COM7. Select baud rate and other parameters according to your transceiver manual. (Please notice: all Yaesu transceivers require 2 stop bits.)
- Select a serial port number for PTT and CW outputs (PTT is attached to the RTS wire, and CW is attached to the DTR wire). In this example, COM8.
- If your program is using FSK output, select a serial port for the FSK function. In this example, COM9. (You may also need to check/uncheck the **FSK reverse** check-box at the Settings tab of the TI Manager program.)
- If your program is using WINKEY, select a serial port for the WINKEY function. In this example, COM10.

To set up a specific program, please refer to the Software Setup examples.

Start operating now!

Please notice five LEDs at the front panel of your interface. These LEDs will help you set up your software as well as to check if everything is fine during operating.



Use Main and Sub potentiometers to adjust input volume. The TX potentiometer lets you set output volume in transmit mode.