

1 Installation of the WTI software and drivers

Start **WTI Setup** from the installation CD and follow the on-screen instructions.

You may also download the latest version of the software from the **Downloads** section of our website, www.rigexpert.com.



Once the setup program is finished, the **WTI configurator** utility will be started.

This program is needed for the first time configuration.

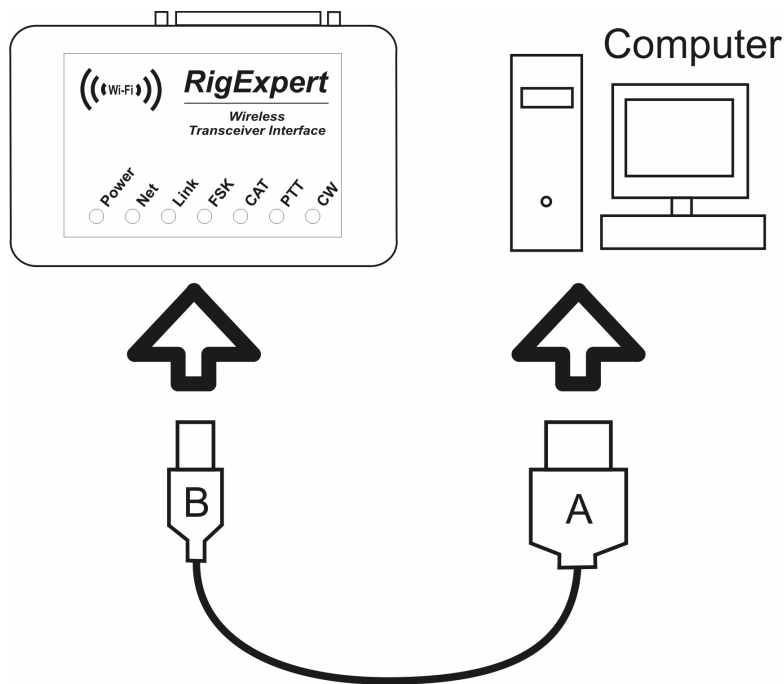


2 First time configuration

Skip this step if your WTI device is already configured.

Use a standard USB A-B cable to connect your RigExpert WTI to a USB port of your computer. It is recommended to use USB sockets located at the back panel of the PC.

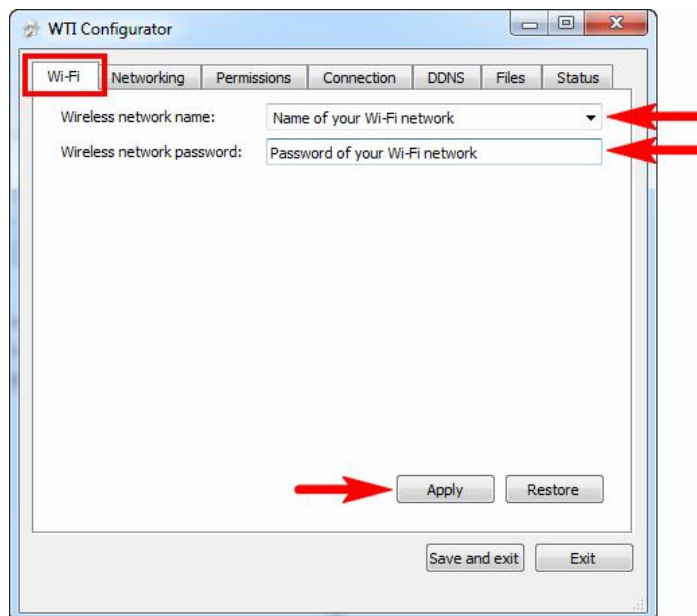
Once the cable is connected, computer detects the new device. The user does not have to interact at this step.



If not already started, run the **WTI configurator** utility from the **Start – All Programs – RigExpert WTI** menu.

Please set the **Wireless network name** and the **Wireless network password** at the **Wi-Fi** tab.

Press the **Apply** button.

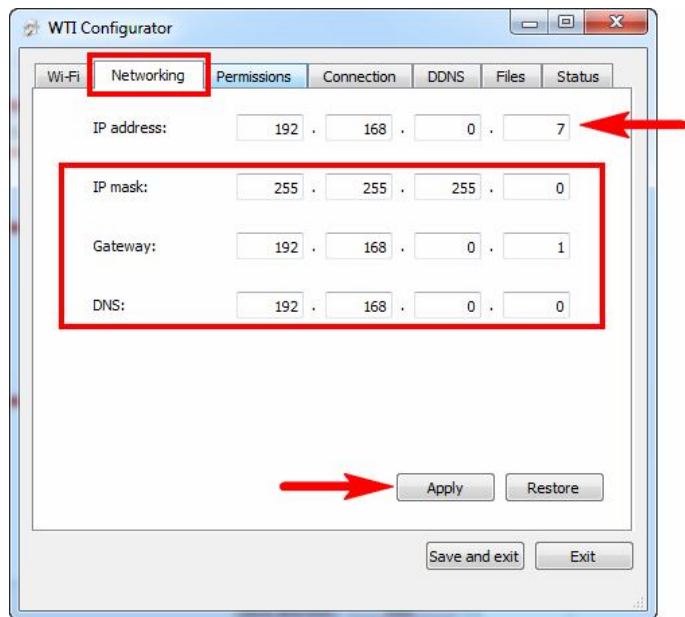


3 First time configuration – continued

Switch to the **Networking** tab.

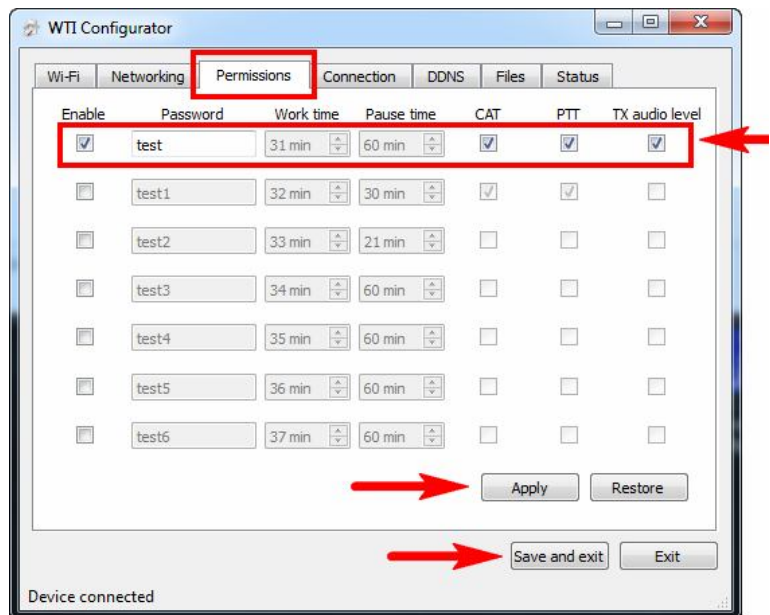
Enter an **IP address** of your WTI device within your wireless network, making sure this address is not already used by any other device.

Enter **IP mask**, **Gateway** and **DNS** according to the settings of your wireless router, then press the **Apply** button.



Switch to the **Permissions** tab and create a password to access your WTI device from the network.

Notice the **CAT**, **PTT** and **TX audio level** check-boxes: you may allow or disallow the user control your transceiver, activate transmit mode and adjust transmitter level. Create additional permissions with other passwords, if needed.



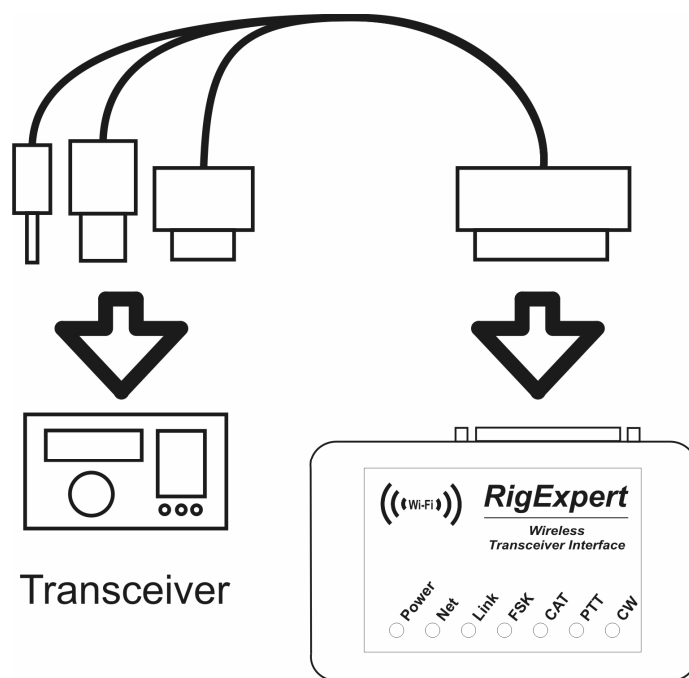
Make a note of the **IP address** and the **password** (or passwords); you will need these parameters later to configure the operator's software.

Press the **Apply** button. Finally, press the **Save and exit** button.

4 Transceiver connection

Disconnect your WTI interface from the computer, and the plug it into your transceiver. This connection is made by using a specialized cable. A specific type of the cable depends on the manufacturer and the model of your transceiver.

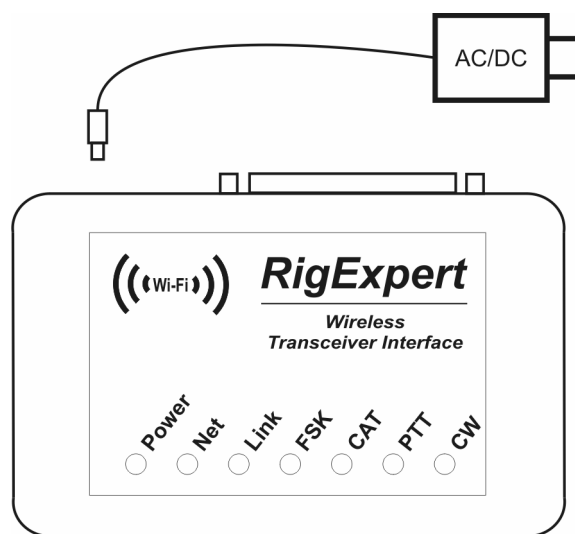
Please watch the marking to make sure all plugs are inserted properly to corresponding sockets located on your transceiver.



Connect a 9...14V power supply to your WTI interface.

You may use an AC/DC wall wart adapter (capable to supply current up to 0.5A) for this purpose.

Alternatively, you may take power directly from the power supply of your transceiver.



5

Setting up the ShackLink software

Run the **ShackLink** program from the **Start – All Programs – RigExpert WTI** menu.

The ShackLink is an operator’s part of your system, which lets radio amateur software to communicate to your WTI interface.

This program can be installed on any computer, not necessarily on the one used to configure your RigExpert WTI.

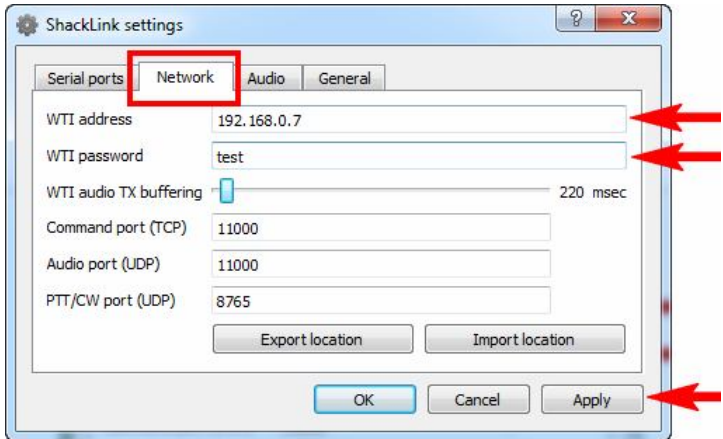
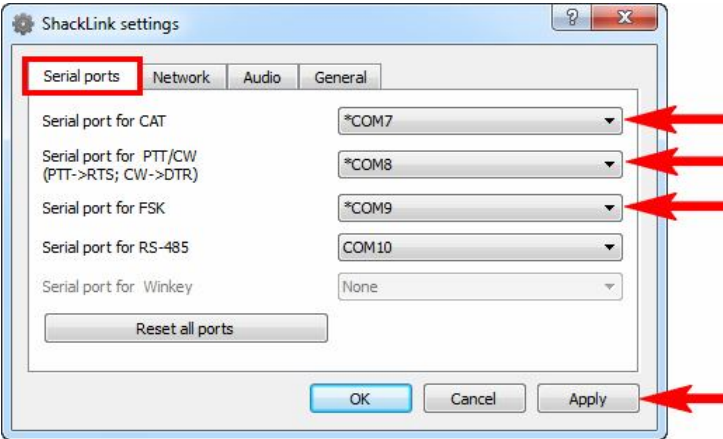
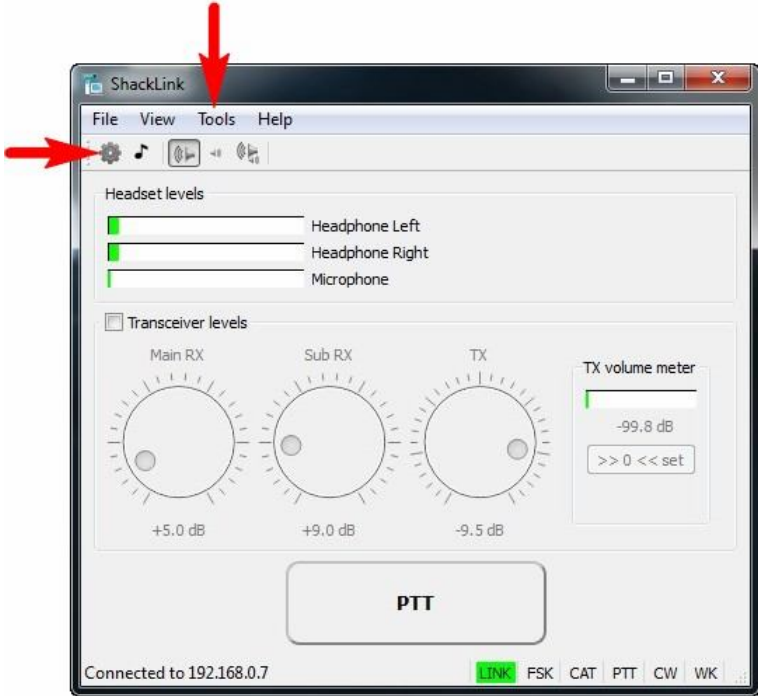
In the ShackLink program, go to the **Tools – Setting** menu. Select the **Serial ports** tab.

Select virtual serial ports which should be created by the ShackLink for other software to provide CAT (**COM7**), PTT/CW (**COM8**) and FSK (**COM9**) functions.

Press the **Apply** button.

Switch to the **Network** tab and enter the IP address and the password which you previously used to set up your WTI interface.

Press the **Apply** button to save your settings.



6

Setting up the ShackLink software – continued

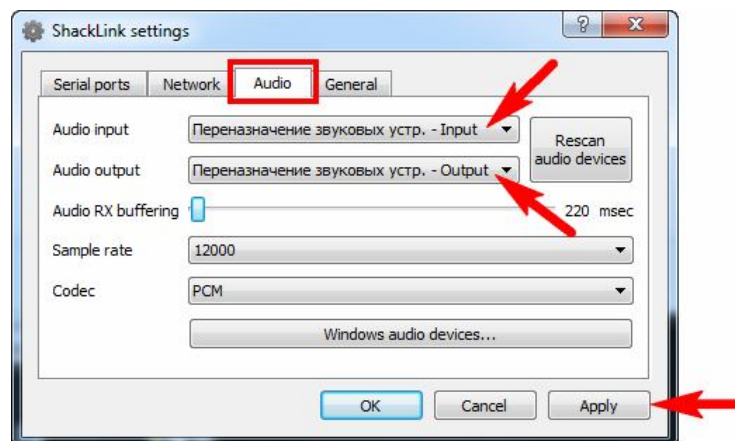
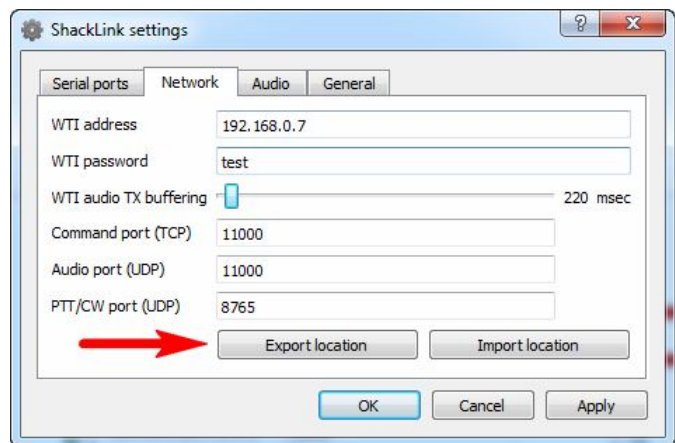
The network settings can be saved to a file (use the **Export location** button). You may double-click this file to let the ShackLink program automatically connect to a specific WTI interface.

You may even send the file to a friend to access your WTI interface via Internet (you should configure your wireless router to forward specific TCP and UDP ports).

Switch to the **Audio** tab.

Select **Microphone** from the **Audio input** list to operate voice modes, and then select **Speakers** from the **Audio output** list to be able to hear the received audio.

Press the **Apply** button to save your settings, and then **OK** to close the window.

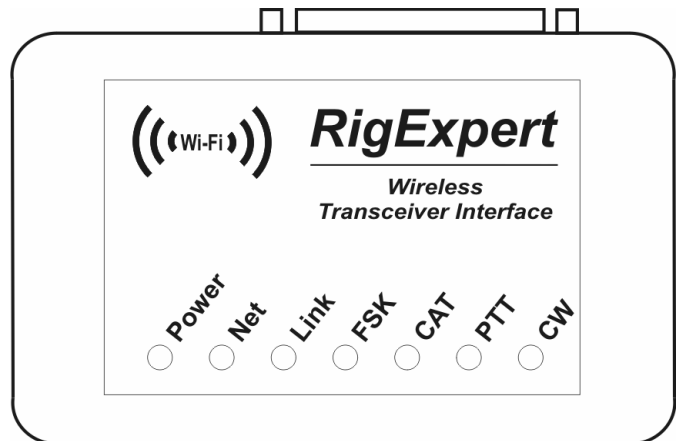


7

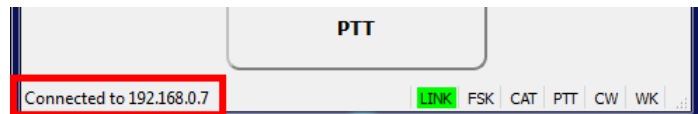
Checking the connection

Once the ShackLink software is configured, check the connection to the WTI device. Watch the LEDs on the cover of your interface:

- The **Power** LED shows when the power is applied;
- The **Net** LED lights when the WTI device connects to your wireless router;
- The **Link** LED indicates when the ShackLink program has established connection to the WTI interface.



Please also watch the connection status at the bottom left corner of the ShackLink program.



8

Transceiver setup

Turn your transceiver on, and then make sure you can hear received audio from your computer speakers.

Adjust RX audio levels by using RF gain or/and AF gain knobs on your transceiver, as well as by **Main RX** and **Sub RX** knobs in the ShackLink program.

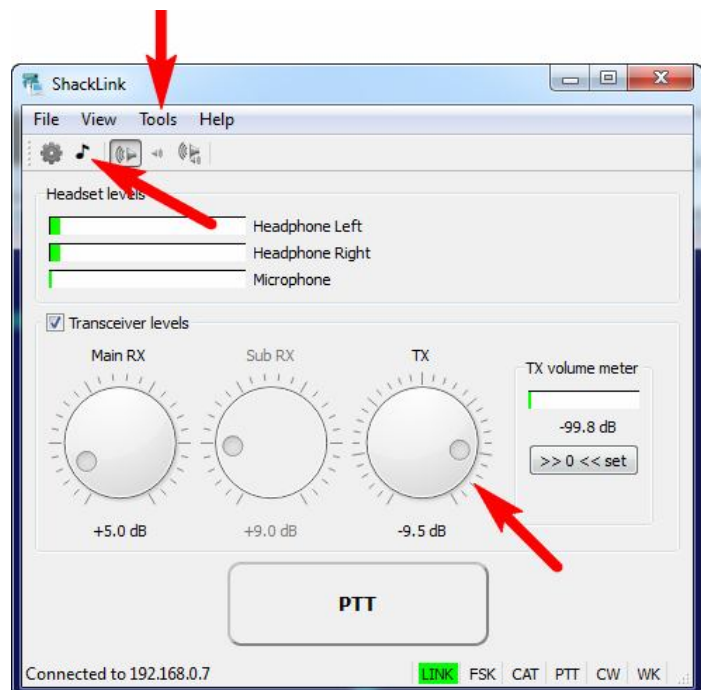
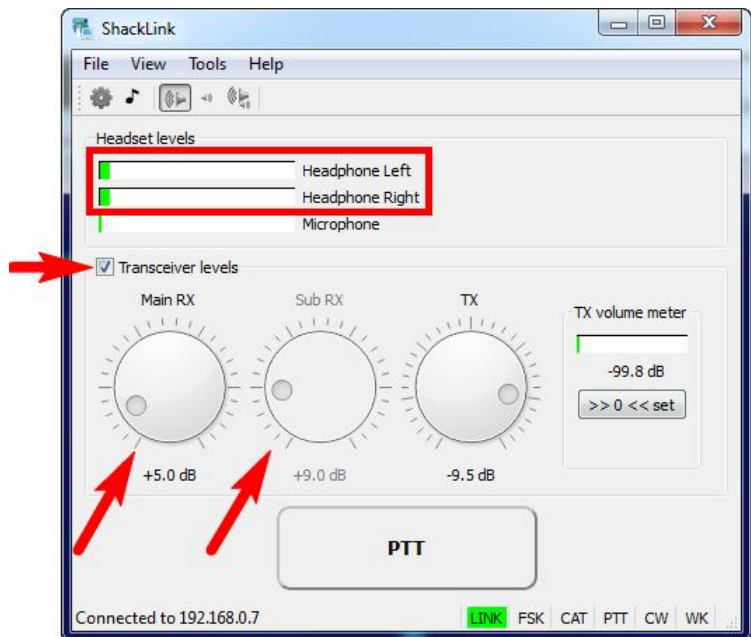
Watching the **Headphone** level indicators, avoid the overloading.

Test your rig in transmit mode.

Select the **Tools – Tone 1 kHz** menu (or click the corresponding button on the toolbar). Your transceiver will now start transmitting.

Set the desired output power level by using the **TX Power** knob on your transceiver, as well as the **TX** knob in the ShackLink program.

Stop transmitting by clicking the PTT button.



9

Set up programs for operating phone, CW and digital modes

RigExpert WTI is designed to work with various programs, such as MixW, MMTTY, MMSSTV, MMVARI, HRD, WinTest and many others. In general, the following hardware-related settings should be done in the software:

- Choose an audio device for audio input and output, should **Microphone (e2eSoft Audio)** or **Line in (e2eSoft Audio)** and **Speaker (e2eSoft Audio)**.
- Select a serial port number for the CAT system. In this example, **COM2**. Select baud rate and other parameters according to your transceiver manual. (Please notice: all Yaesu transceivers require 2 stop bits.)
- Select a serial port number for PTT and CW outputs (PTT is attached to the RTS wire, and CW is attached to the DTR wire). In this example, **COM3**.
- If your program is using FSK output, select a serial port for the FSK function. In this example, **COM4**.

To set up a specific program, please refer to the Software Setup examples.

10

Start operating now!

You are now ready to start operating. In voice modes (such as SSB, FM or AM), click the **PTT** button in the main window of the ShackLink program. You may also use the Ctrl + Space key combination even if the ShackLink is minimized or set as a background window.

To check if the software is operating properly, you may watch the status indicators in the bottom right corner of the ShackLink, as well as LEDs on the cover of the WTI device.